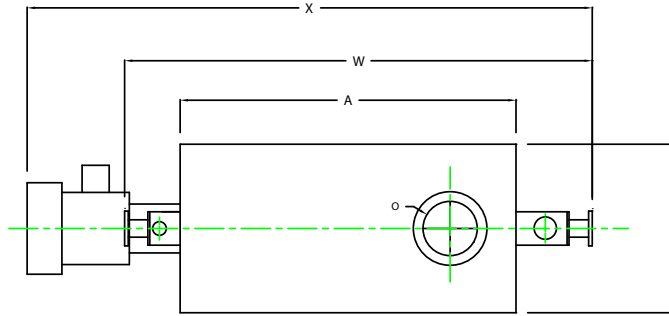
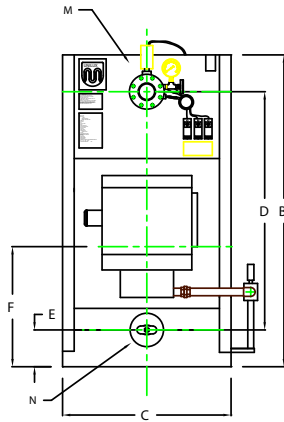


ZF0400W

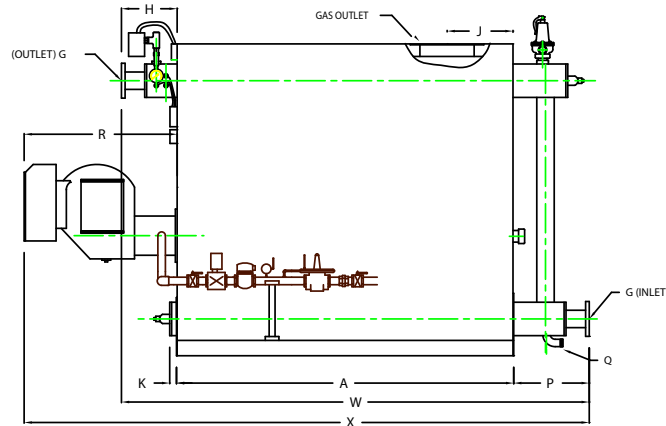


PLAN

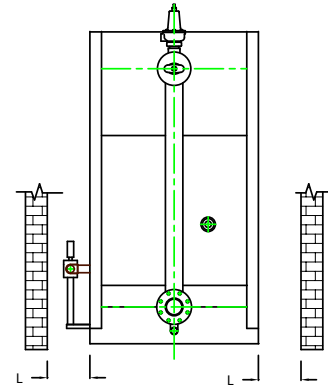
CHIMNEY FLANGE DIMS:
 O.D. = 19"
 I.D. = 14-1/4"
 B.C.D = 16-1/2"
 NO. OF HOLES = 8
 HOLE DIAMETER = 0.53"



FRONT VIEW



SIDE VIEW



REAR VIEW

	BOILER MODEL - ZF400W	INCHES	METRIC
A	LENGTH OF BASE	87	2210
A1	LENGTH OF SUPPORT FROM BASE	-	-
B	HEIGHT	80 1/2	2045
C	WIDTH OF BASE	43 1/2	1105
D	CTR. LOWER DRUM TO CTR. UPPER DRUM	61 1/2	1562
E	CENTER OF LOWER DRUM TO BOTTOM	9 1/2	241
F	CENTER OF BURNER OPENING TO BOTTOM	31	787
G	INLET / OUTLET FLANGE, CLASS 150	4	102
H	NOZZLE CLEARANCE FROM TOP, FRONT	14 1/4	362
J	CENTER OF FLUE GAS OUTLET TO REAR	17	432
K	DRUM CLEARANCE FROM BASE, FRONT	1 3/4	44
L	TUBE REMOVAL CLEARANCE FROM BASE	26	660
M	UPPER DRUM, OD, NPS	8 5/8	219
N	LOWER DRUM, OD, NPS	8 5/8	219
O	FLUE GAS OUTLET, ID	14	356
P	NOZZLE CLEARANCE FROM BASE, REAR	20 1/8	511
Q	BLOWDOWN, NPT	1 1/2	38
R	BURNER DIMENSION	39 1/2	1003
W	OVERALL BOILER LENGTH	121 3/8	3083
X	OVERALL BOILER LENGTH WITH BURNER	146 5/8	3724

NOTE: "X" DIMENSION MAY VARY BASED ON BURNER

NOTE: DIMENSIONS SUBJECT TO CHANGE WITHOUT NOTICE
 CONSULT FACTORY FOR CERTIFIED DIMENSIONS.

UNILUX		UNILUX ADVANCED MFG., LLC	
		30 COMMERCE PARK DRIVE	
		NEWKYLN, NY 12209	
		Ph: (518) 344-7490 Fax: (518) 344-7495	
<small>THIS DRAWING PRESENTS A CONFIDENTIAL PROPRIETARY DESIGN. ALL RIGHTS FOR REPRODUCTION, MANUFACTURING OR PATENTS ARE RESERVED BY UNILUX BOLLER CORP.</small>			
PROJECT:	-	Date:	05AUG09
LOCATION:	-	Date:	05AUG09
Model Sizes:	ZF 400W	Scale:	NTS
BURNER:	-	REV:	0
ELECTRIC:	-		
SUPPLY PSI:	-		
Drawn By:	RIZ RACAZA	Date:	05AUG09
Checked By:	DAVID RAMSON	Date:	05AUG09
Drawing No.:	QB000000	Scale:	NTS
File No.:	JB000000	REV:	0