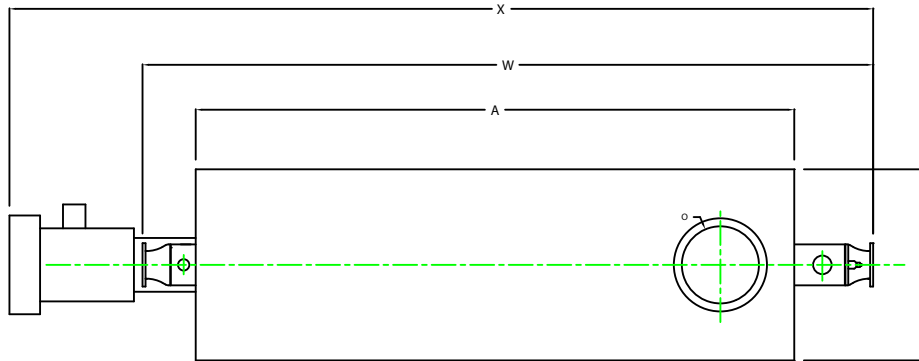
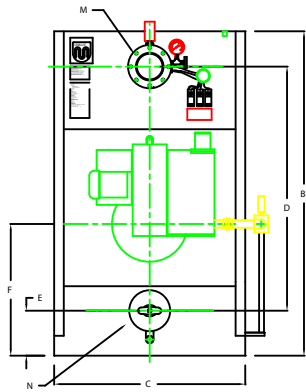


ZF1600W

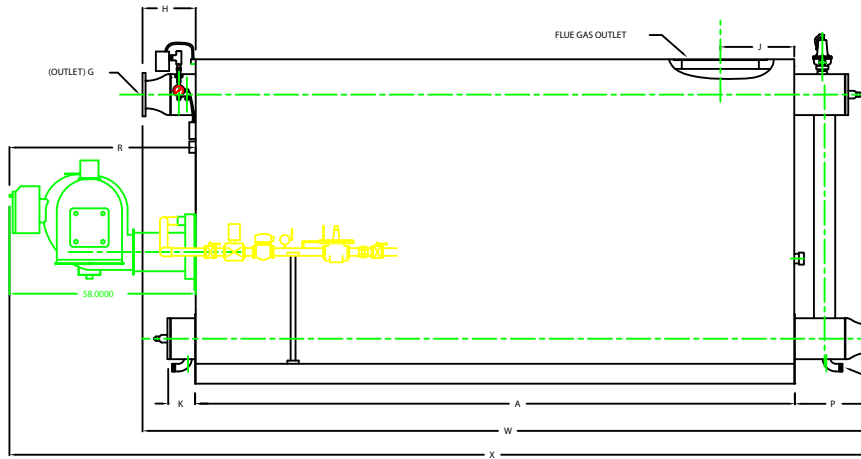


PLAN

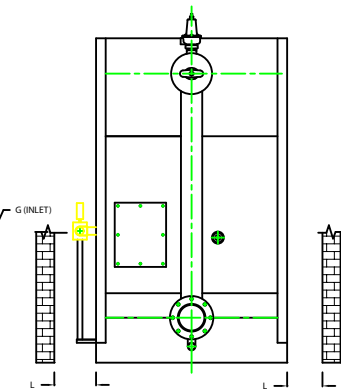
CHIMNEY FLANGE DIMS:
 O.D. = 29"
 I.D. = 24-1/4"
 R.C.D = 26-1/2"
 NO. OF HOLES = 12
 HOLE DIAMETER = 0.53"



FRONT VIEW



SIDE VIEW



REAR VIEW

	INCHES	METRIC
BOILER MODEL - ZF1600W		
A	186 3/4	4743
A1	LENGTH OF SUPPORT FROM BASE	
B	HEIGHT	2565
C	WIDTH OF BASE	1511
D	CTR. LOWER DRUM TO CTR. UPPER DRUM	1930
E	CENTER OF LOWER DRUM TO BOTTOM	356
F	CENTER OF BURNER OPENING TO BOTTOM	1041
G	INLET / OUTLET FLANGE, CLASS 150	203
H	NOZZLE CLEARANCE FROM TOP, FRONT	435
I	CENTER OF FLUE GAS OUTLET TO REAR	584
J	DRUM CLEARANCE FROM BASE, FRONT	219
K	TUBE REMOVAL CLEARANCE FROM BASE	1067
L	UPPER DRUM, O.D. NPS	324
M	LOWER DRUM, O.D. NPS	324
N	FLUE GAS OUTLET, I.D.	610
O	NOZZLE CLEARANCE FROM BASE, REAR	638
P	BLOWDOWN, NPT	51
Q	BURNER DIMENSION	1473
R	OVERALL BOILER LENGTH	5817
W	OVERALL BOILER LENGTH WITH BURNER	6855
X		

NOTE: "X" DIMENSION MAY VARY BASED ON CONFIGURATION

NOTE: DIMENSIONS SUBJECT TO CHANGE WITHOUT NOTICE
 CONSULT FACTORY FOR CERTIFIED DIMENSIONS.

UNILUX ADVANCED MFG. LLC 30 COMMERCE PARK DRIVE NISKAYUNA, NY 12035 Ph: (518) 344-7499 Fax: (518) 344-7495			
<small>THIS DOCUMENT IS UNCLASSIFIED AND UNCONTROLLED. IT IS THE PROPERTY OF UNILUX ADVANCED MFG. LLC. IT IS TO BE USED ONLY FOR THE PROJECT AND FOR THE SPECIFIC CLIENT FOR WHICH IT WAS PREPARED.</small>			
PROJECT:			
LOCATION:			
Model Sizes:	ZF 1600W		
BURNER:			
ELECTRICAL:			
SUPPLY PSI:			
Drawn By:	RIZ RACAZA	Date:	05/16/2009
Checked By:	DAVID RAMSON	Date:	05/16/2009
Drawing No.:	080000	Scale:	NTS
File No.:	080000	REV:	0