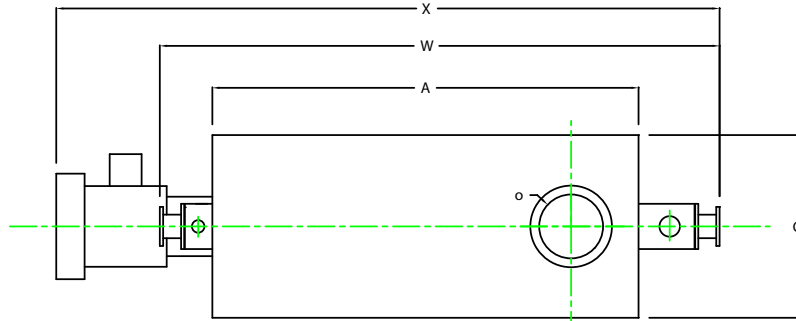
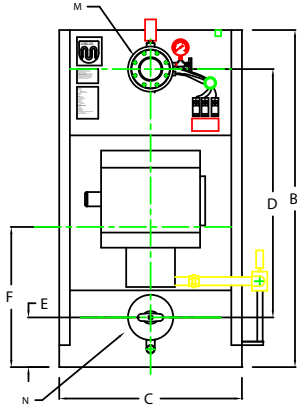


# ZF0800W



PLAN

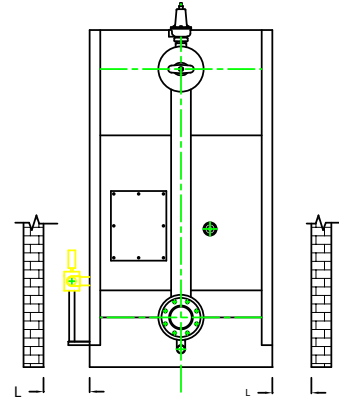
CHIMNEY FLANGE DIMS:  
 O.D. = 23"  
 I.D. = 18-1/4"  
 B.C.D = 20-1/2"  
 NO. OF HOLES = 8  
 HOLE DIAMETER = 0.53"



FRONT VIEW



SIDE VIEW



REAR VIEW

	INCHES	METRIC
BOILER MODEL - ZF800W		
A LENGTH OF BASE	120 1/2	3061
A1 LENGTH OF SUPPORT FROM BASE	-	-
B HEIGHT	95	2413
C WIDTH OF BASE	51 1/2	1308
D CTR. LOWER DRUM TO CTR. UPPER DRUM	70	1778
E CENTER OF LOWER DRUM TO BOTTOM	14	356
F CENTER OF BURNER OPENING TO BOTTOM	39 1/2	1003
G INLET / OUTLET FLANGE CLASS 150	6	152
H NOZZLE CLEARANCE FROM TOP FRONT	14 1/4	362
J CENTER OF FLUE GAS OUTLET TO REAR	19	483
K DRUM CLEARANCE FROM BASE FRONT	8 5/8	219
L TUBE REMOVAL CLEARANCE FROM BASE	34	864
M UPPER DRUM, OD, NPS	12 3/4	324
N LOWER DRUM, OD, NPS	12 3/4	324
O FLUE GAS OUTLET ID	18	457
P NOZZLE CLEARANCE FROM BASE, REAR	22 5/8	575
Q BLOWDOWN, NPT	2	51
R BURNER DIMENSION	44	1118
W OVERALL BOILER LENGTH	157 3/8	3997
X OVERALL BOILER LENGTH WITH BURNER	187 1/8	4753

NOTE: "X" DIMENSION MAY VARY BASED ON BURNER

NOTE: DIMENSIONS SUBJECT TO CHANGE WITHOUT NOTICE  
 CONSULT FACTORY FOR CERTIFIED DIMENSIONS.

<b>UNILUX ADVANCED MFG., LLC</b> 30 COMMERCE PARK DRIVE NISKAYUNA, NEW YORK, 12039 PH: (518) 344-7490 FAX: (518) 344-7495			
<small>THE FOLLOWING DIMENSIONS, CLEARANCES, WEIGHTS AND WEIGHTS ARE SUBJECT TO REPRODUCTION, MANUFACTURING OR MATERIALS VARIATIONS.</small>			
<b>PROJECT:</b>			
<b>LOCATION:</b>			
Model Size: <b>ZF 800W</b>			
<b>BURNER</b>			
<b>ELECTRIC</b>			
<b>SUPPLY PSI</b>			
Drawn By:	<b>RIZ RAICAZA</b>	Date:	<b>05AUG09</b>
Checked By:	<b>DAVID RAMSON</b>	Date:	<b>05AUG09</b>
Drawing No.:	<b>QB000000</b>	Scale:	<b>INTS</b>
File No.:	<b>JB000000</b>	REV:	<b>0</b>