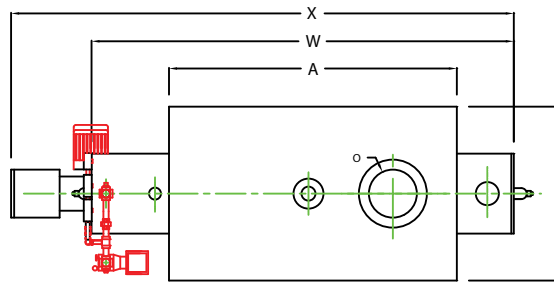
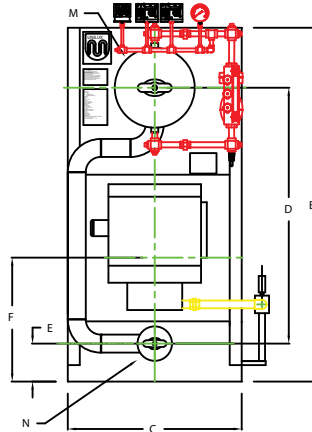


ZF0300LS

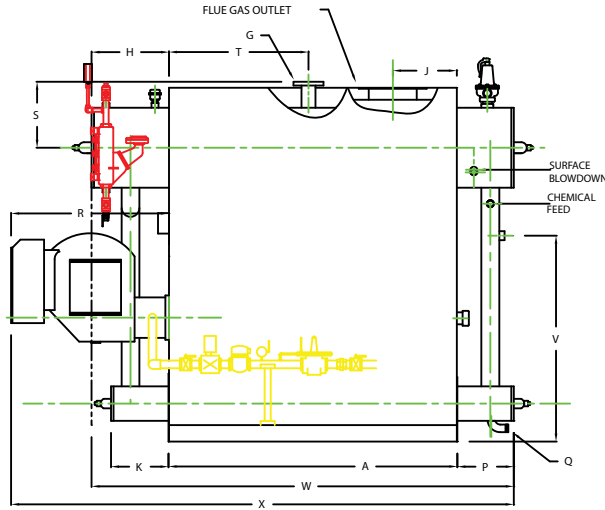


PLAN

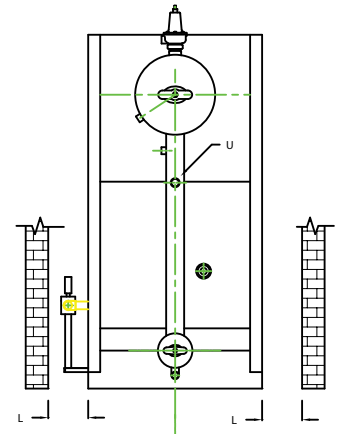
CHIMNEY FLANGE DIMS:
 O.D. = 17"
 I.D. = 12-1/4"
 B.C.D = 14-1/2"
 NO. OF HOLES = 8
 HOLE DIAMETER = 0.53"



FRONT VIEW



SIDE VIEW



REAR VIEW

	BOILER MODEL - ZF300LS	INCHES	METRIC
A	LENGTH OF BASE	72 1/4	1830
A1	LENGTH OF SUPPORT FROM BASE	-	-
B	HEIGHT	88 9/16	2249
C	WIDTH OF BASE	43 1/2	1105
D	CTR. LOWER DRUM TO CTR. UPPER DRUM	64	1625
E	CENTER OF LOWER DRUM TO BOTTOM	9 9/16	243
F	CENTER OF BURNER OPENING TO BOTTOM	29 3/8	746
G	OUTLET FLANGE CLASS 150	3	76
H	DRUM CLEARANCE FROM TOP FRONT	19 3/8	492
J	CENTER OF FLUE GAS OUTLET TO REAR	16	406
K	DRUM CLEARANCE FROM BASE, FRONT	14 1/4	362
L	TUBE REMOVAL CLEARANCE FROM BASE	26	660
M	UPPER DRUM, OD, NPS	20	508
N	LOWER DRUM, OD, NPS	8 5/8	219
O	FLUE GAS OUTLET, I.D.	12	305
P	DRUM CLEARANCE FROM BASE, REAR	14	356
Q	BLOWDOWN, NPT	1 1/2	38
R	BURNER DIMENSION	39 1/2	1003
S	CENTER OF TOP DRUM TO TOP OF OUTLET	16 1/2	419
T	CENTER OF OUTLET TO ENCLOSURE FRONT	35 1/16	891
U	INLET, 3000 PSI ASA HALF COUPLING	1 1/4	32
V	FEEDWATER INLET FROM BASE	51 9/16	1310
W	OVERALL BOILER LENGTH	105 5/8	2683
X	OVERALL BOILER LENGTH W/ BURNER	125 3/4	3194

NOTE: DIMENSIONS SUBJECT TO CHANGE WITHOUT NOTICE
 CONSULT FACTORY FOR CERTIFIED DIMENSIONS.

NOTE: "X" DIMENSION MAY VARY BASED ON BURNER

	UNILUX ADVANCED MFG., LLC. 30 COMMERCE PARK DRIVE NISKAYUNA, NY 12309 Ph: (518) 344-7490 Fax: (518) 344-7495		
	<small>THIS DRAWING PROCESS IS A CONFIDENTIAL, PROPRIETARY DESIGN. ALL RIGHTS FOR REPRODUCTION, MANUFACTURING OR PATENTS ARE RESERVED BY UNILUX (NYSE: UNL).</small>		
PROJECT:	-		
LOCATION:	-		
Model Sizes:	ZF-300LS		
BURNER:	-		
ELECTRIC:	-		
SUPPLY PSI:	-		
Drawn By:	RIZ RACAZA	Date:	05AUG09
Checked By:	DAVID RAMSON	Date:	05AUG09
Drawing No.:	QB000000	Scale:	NTS
File No.:	JB000000	REV:	0