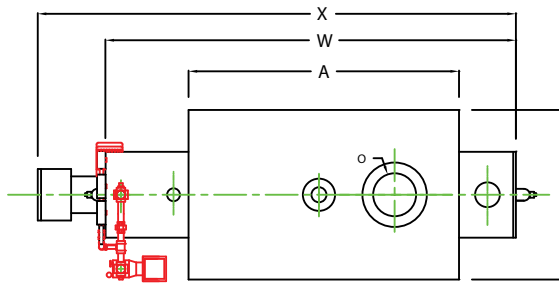
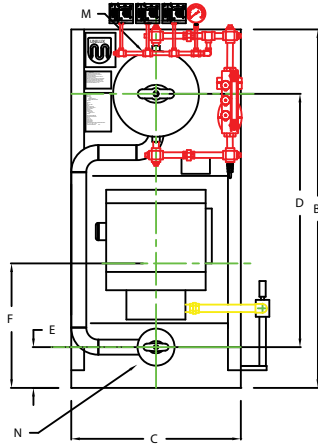


ZF0200LS

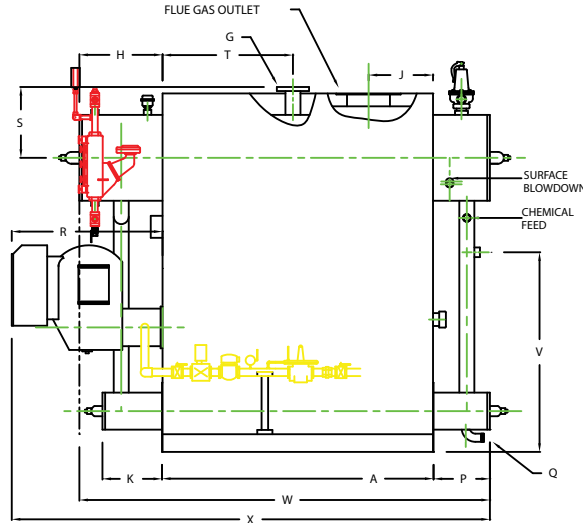


CHIMNEY FLANGE DIMS:
 O.D. = 15"
 I.D. = 10-1/4"
 B.C.D = 12-1/2"
 NO. OF HOLES = 6
 HOLE DIAMETER = 0.53"

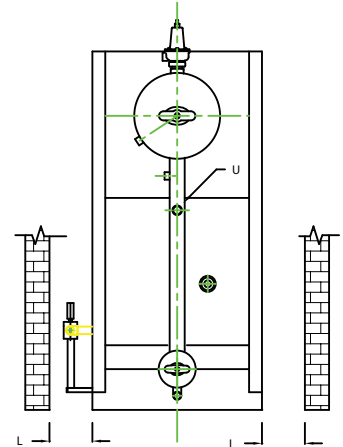
PLAN



FRONT VIEW



SIDE VIEW



REAR VIEW

NOTE: DIMENSIONS SUBJECT TO CHANGE WITHOUT NOTICE
 CONSULT FACTORY FOR CERTIFIED DIMENSIONS.

	BOILER MODEL - ZF200LS	INCHES	METRIC
A	LENGTH OF BASE	63 1/4	1607
A1	LENGTH OF SUPPORT FROM BASE	-	-
B	HEIGHT	83 9/16	2122
C	WIDTH OF BASE	39 1/2	1003
D	CTR. LOWER DRUM TO CTR. UPPER DRUM	59	1499
E	CENTER OF LOWER DRUM TO BOTTOM	9 9/16	243
F	CENTER OF BURNER OPENING TO BOTTOM	27 7/8	708
G	OUTLET FLANGE CLASS 150	3	76
H	DRUM CLEARANCE FROM TOP FRONT	19 3/8	492
J	CENTER OF FLUE GAS OUTLET TO REAR	15	381
K	DRUM CLEARANCE FROM BASE, FRONT	13 3/4	349
L	TUBE REMOVAL CLEARANCE FROM BASE	22	559
M	UPPER DRUM, OD, NPS	20	508
N	LOWER DRUM, OD, NPS	8 5/8	219
O	FLUE GAS OUTLET, I.D.	10	254
P	DRUM CLEARANCE FROM BASE, REAR	13	330
Q	BLOWDOWN, NPT	1 1/2	38
R	BURNER DIMENSION	35 1/8	892
S	CENTER OF TOP DRUM TO TOP OF OUTLET	16 1/2	419
T	CENTER OF OUTLET TO ENCLOSURE FRONT	30 1/2	775
U	INLET, 3000 PSI ASA HALF COUPLING	1 1/4	32
V	FEEDWATER INLET FROM BASE	46 9/16	1183
W	OVERALL BOILER LENGTH	95 5/8	2429
X	OVERALL BOILER LENGTH W/ BURNER	111 3/8	2829

NOTE: "X" DIMENSION MAY VARY BASED ON BURNER

UNILUX ADVANCED MFG., LLC.
 30 COMMERCE PARK DRIVE
 NISKAYUNA, NY 12309
 Ph: (518) 344-7490 Fax: (518) 344-7495

THIS DRAWING REMAINS A CONFIDENTIAL, PROPRIETARY DESIGN. ALL RIGHTS FOR REPRODUCTION, MANUFACTURING OR PATENTS ARE RESERVED BY UNILUX BOILER CORP.

PROJECT:	-	Date:	05AUG09
LOCATION:	-	Date:	05AUG09
Model Sizes	ZF 200LS	Scale	NTS
BURNER	-	REV:	0
ELECTRIC	-		
SUPPLY PSI	-		
Drawn By:	RIZ RACAZA	Date:	05AUG09
Checked By:	DAVID RAMSON	Date:	05AUG09
Drawing No.	QB000000	Scale	NTS
File No.:	JB000000	REV:	0