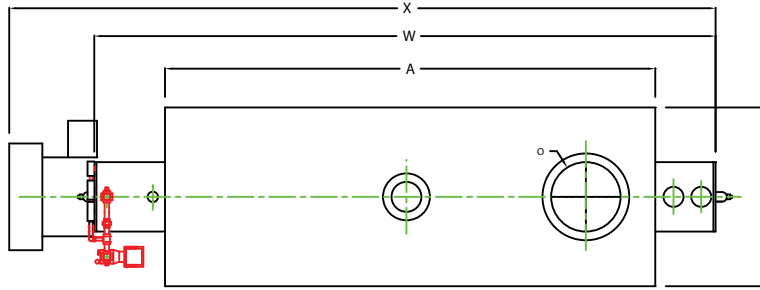
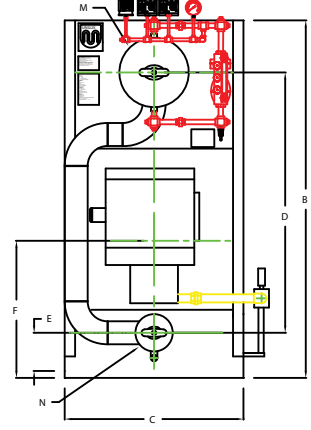


ZF1000LS

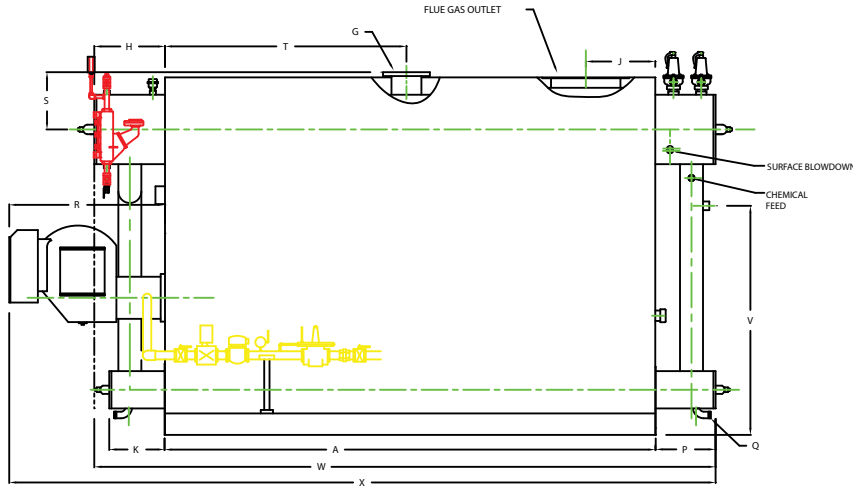


PLAN

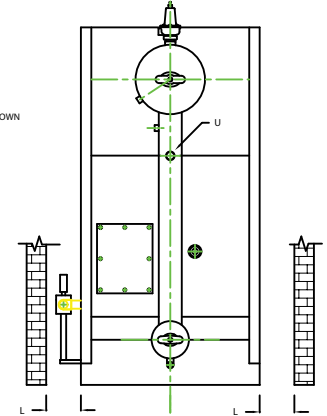
CHIMNEY FLANGE DIMS:
 O.D. = 25"
 I.D. = 20-1/4"
 B.C.D = 22-1/2"
 NO. OF HOLES = 8
 HOLE DIAMETER = 0.53"



FRONT VIEW



SIDE VIEW



REAR VIEW

NOTE: DIMENSIONS SUBJECT TO CHANGE WITHOUT NOTICE
 CONTACT FACTORY FOR CERTIFIED DIMENSIONS.

BOILER MODEL - ZF1000LS	INCHES	METRIC
A LENGTH OF BASE	141 5/8	3598
A1 LENGTH OF SUPPORT FROM BASE	-	-
B HEIGHT	102 13/16	2611
C WIDTH OF BASE	51 1/2	1308
D CTR. LOWER DRUM TO CTR. UPPER DRUM	75	1905
E CENTER OF LOWER DRUM TO BOTTOM	12 13/16	325
F CENTER OF BURNER OPENING TO BOTTOM	38 5/16	973
G OUTLET FLANGE CLASS 150	8	203
H DRUM CLEARANCE FROM TOP FRONT	20 3/8	518
J CENTER OF FLUE GAS OUTLET TO REAR	20	508
K DRUM CLEARANCE FROM BASE FRONT	15 13/16	401
L TUBE REMOVAL CLEARANCE FROM BASE	34	864
M UPPER DRUM, OD, NPS	20	508
N LOWER DRUM, OD, NPS	10 3/4	273
O FLUE GAS OUTLET I.D.	20	508
P DRUM CLEARANCE FROM BASE, REAR	17 1/8	435
Q BLOWDOWN, NPT	1 1/2	38
R BURNER DIMENSION	44 7/8	1140
S CENTER OF TOP DRUM TO TOP OF OUTLET	16 1/2	419
T CENTER OF OUTLET TO ENCLOSURE FRONT	69 11/16	1770
U INLET 3000 PSI ASA HALF COUPLING	2	51
V FEEDWATER INLET FROM BASE	65 13/16	1672
W OVERALL BOILER LENGTH	179 1/8	4550
X OVERALL BOILER LENGTH W/ BURNER	203 5/8	5172

NOTE: "X" DIMENSION MAY VARY BASED ON BURNER

	UNILUX ADVANCED MFG., LLC. 30 COMMERCE PARK DRIVE NISKAYUNA, NY 12099 Ph: (518) 344-7490 Fax: (518) 344-7495		
	THIS DRAWING CONVEYS A CONFIDENTIAL PROPRIETARY DESIGN. ALL RIGHTS FOR REPRODUCTION, MANUFACTURING OR PATENTS ARE RESERVED BY UNILUX ADVANCED MFG.		
	PROJECT:		
	LOCATION:		
Model Size:	ZF-1000LS		
BURNER:			
ELECTRIC:			
SUPPLY P/S:			
Drawn By:	RIZ RACAZA	Date:	05AUG09
Checked By:	DAVID RAMSON	Date:	05AUG09
Drawing No.:	QB000000	Scale:	NTS
File No.:	JB000000	REV:	0