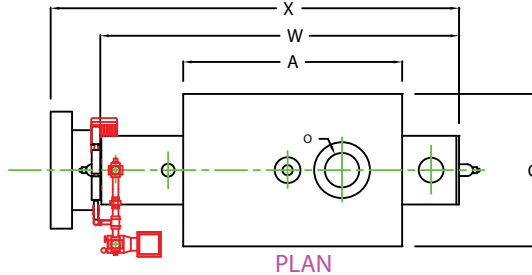
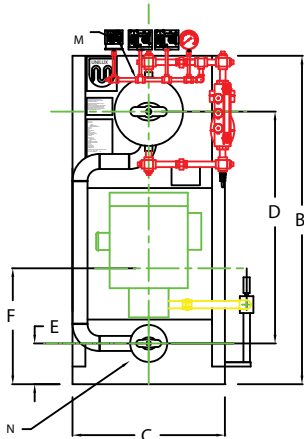


ZF0100LS

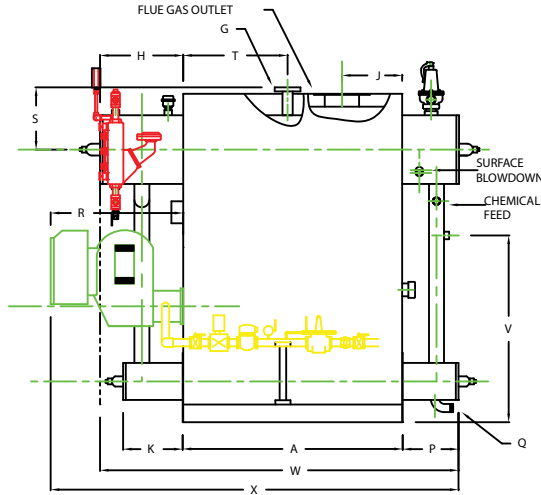


PLAN

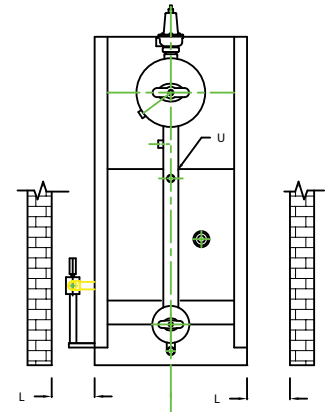
CHIMNEY FLANGE DIMS:
 O.D. = 13"
 I.D. = 8-1/4"
 B.C.D = 10-1/2"
 NO. OF HOLES = 6
 HOLE DIAMETER = 0.53"



FRONT VIEW



SIDE VIEW




REAR VIEW

NOTE: DIMENSIONS SUBJECT TO CHANGE WITHOUT NOTICE
 CONSULT FACTORY FOR CERTIFIED DIMENSIONS.

	BOILER MODEL - ZF100LS	INCHES	METRIC
A	LENGTH OF BASE	51 1/4	1302
A1	LENGTH OF SUPPORT FROM BASE	-	-
B	HEIGHT	76 9/16	1945
C	WIDTH OF BASE	35 1/2	902
D	CTR. LOWER DRUM TO CTR. UPPER DRUM	54	1372
E	CENTER OF LOWER DRUM TO BOTTOM	9 9/16	243
F	CENTER OF BURNER OPENING TO BOTTOM	25 7/8	657
G	OUTLET FLANGE CLASS 150	2	51
H	DRUM CLEARANCE FROM TOP, FRONT	19 7/32	488
J	CENTER OF FLUE GAS OUTLET TO REAR	14	356
K	DRUM CLEARANCE FROM BASE, FRONT	13 3/4	337
L	TUBE REMOVAL CLEARANCE FROM BASE	18	457
M	UPPER DRUM, OD, NPS	16	406
N	LOWER DRUM, OD, NPS	8 5/8	219
O	FLUE GAS OUTLET, I.D.	8	203
P	DRUM CLEARANCE FROM BASE, REAR	13	330
Q	BLOWDOWN, NPT	1 1/2	38
R	BURNER DIMENSION	31 1/8	791
S	CENTER OF TOP DRUM TO TOP OF OUTLET	14 1/2	368
T	CENTER OF OUTLET TO ENCLOSURE FRONT	24 7/16	621
U	INLET, 3000 PSI ASA HALF COUPLING	1	25
V	FEEDWATER INLET FROM BASE	43 9/16	1106
W	OVERALL BOILER LENGTH	83 15/32	2120
X	OVERALL BOILER LENGTH W/ BURNER	95 3/8	2423

NOTE: "X" DIMENSION MAY VARY BASED ON BURNER

 UNILUX ADVANCED MFG., LLC. 30 COMMERCE PARK DRIVE NISKAYUNA, NY 12309 Ph: (518) 344-7490 Fax: (518) 344-7495	
<small>THIS DRAWING ENCLOSES A CONFIDENTIAL, PROPRIETARY DESIGN. ALL RIGHTS FOR REPRODUCTION, MANUFACTURING OR PATENTS ARE RESERVED BY UNILUX BOILER CORP.</small>	
PROJECT:	-
LOCATION:	-
Model Sizes	ZF 100LS
BURNER	-
ELECTRIC	-
SUPPLY PSI	-
Drawn By:	RIZ RACAZA
Checked By:	DAVID RAMSON
Drawing No.	Drawing No.
File No.:	File No.:
Date:	05AUG09
Date:	05AUG09
Scale:	NTS
REV:	0