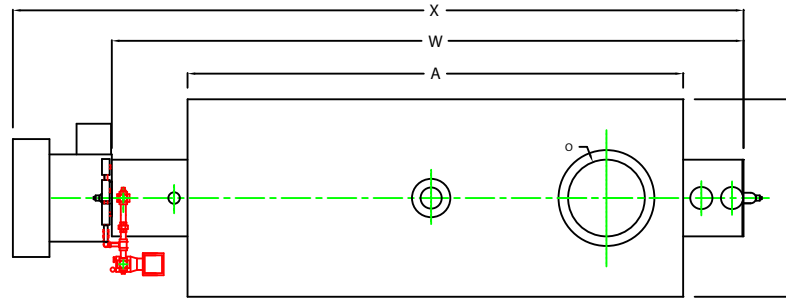
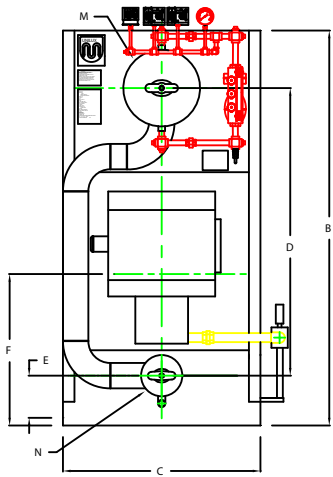


ZF0900HS

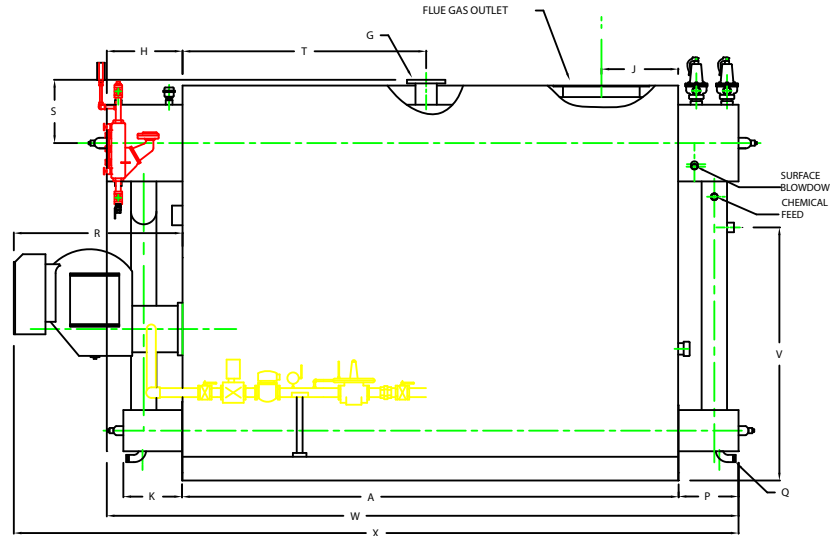


PLAN

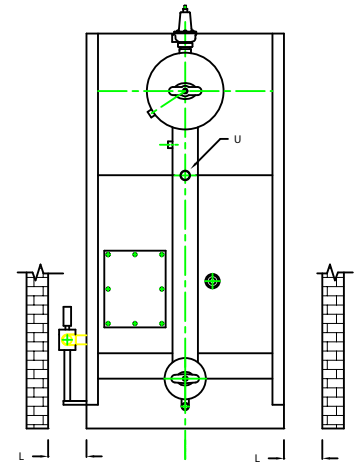
CHIMNEY FLANGE DIMS:
 O.D. = 25"
 I.D. = 20-1/4"
 B.C.D = 22-1/2"
 NO. OF HOLES = 8
 HOLE DIAMETER = 0.53"



FRONT VIEW



SIDE VIEW



REAR VIEW

	INCHES	METRIC
BOILER MODEL - ZF900HS		
A LENGTH OF BASE	129 5/8	3292
A11 LENGTH OF SUPPORT FROM BASE		
B HEIGHT	102 13/16	2611
C WIDTH OF BASE	51 1/2	1308
D CTR. LOWER DRUM TO CTR. UPPER DRUM	75	1905
E CENTER OF LOWER DRUM TO BOTTOM	12 13/16	325
F CENTER OF BURNER OPENING TO BOTTOM	38 5/16	973
G OUTLET FLANGE CLASS 300	4	102
H DRUM CLEARANCE FROM TOP FRONT	20 7/8	530
J CENTER OF FLUE GAS OUTLET TO REAR	20	508
K DRUM CLEARANCE FROM BASE FRONT	16	406
L TUBE REMOVAL CLEARANCE FROM BASE	34	864
M UPPER DRUM, OD, NPS	20	508
N LOWER DRUM, OD, NPS	10 3/4	273
O FLUE GAS OUTLET, I.D.	20	508
P DRUM CLEARANCE FROM BASE, REAR	16 3/8	416
Q BLOWDOWN, NPT	1 1/2	38
R BURNER DIMENSION	44	1118
S CENTER OF TOP DRUM TO TOP OF OUTLET	16 1/2	419
T CENTER OF OUTLET TO ENCLOSURE FRONT	63 11/16	1618
U INLET, 3000 PSI ASA HALF COUPLING	1 1/2	38
V FEEDWATER INLET FROM BASE	65 13/16	1672
W OVERALL BOILER LENGTH	166 7/8	4238
X OVERALL BOILER LENGTH W/ BURNER	190	4826

NOTE: DIMENSIONS SUBJECT TO CHANGE WITHOUT NOTICE
 CONSULT FACTORY FOR CERTIFIED DIMENSIONS.

NOTE: "X" DIMENSION MAY VARY BASED ON BURNER

UNILUX ADVANCED MFG., LLC.	
90 COMMERCE PARK DRIVE NISKAYUNA, NY 12309 Ph: (518) 344-7490 Fax: (518) 344-7495	
<small>THIS DRAWING PROVIDES A CONFIDENTIAL PROPRIETARY DESIGN. ALL RIGHTS FOR REPRODUCTION, MANUFACTURING OR PATENT ARE RESERVED BY UNILUX WORLD CORP.</small>	
PROJECT:	-
LOCATION:	-
Model Sizes:	ZF 900HS
BURNER	-
ELECTRIC	-
SUPPLY PSI	-
Drawn By:	RIZ RACAIZA
Checked By:	DAVID RAMSON
Drawing No.:	0800000
File No.:	1800000
Date:	05AUG09
Date:	05AUG09
Scale:	N.T.S.
REV.:	0