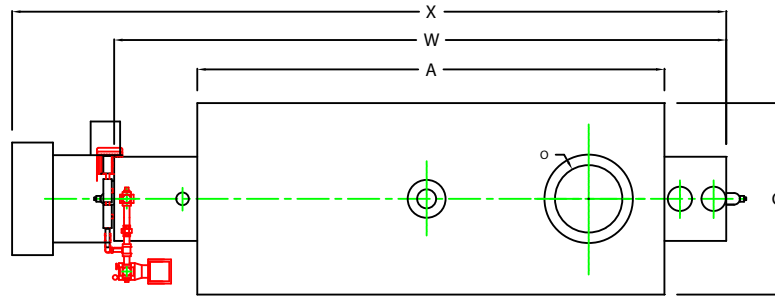
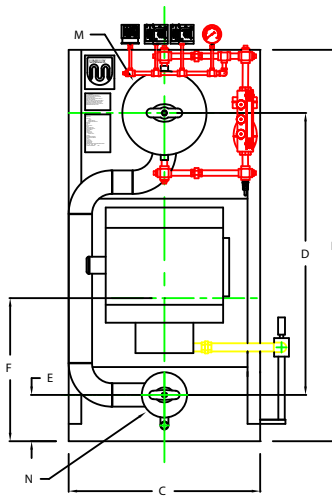


ZF0600HS

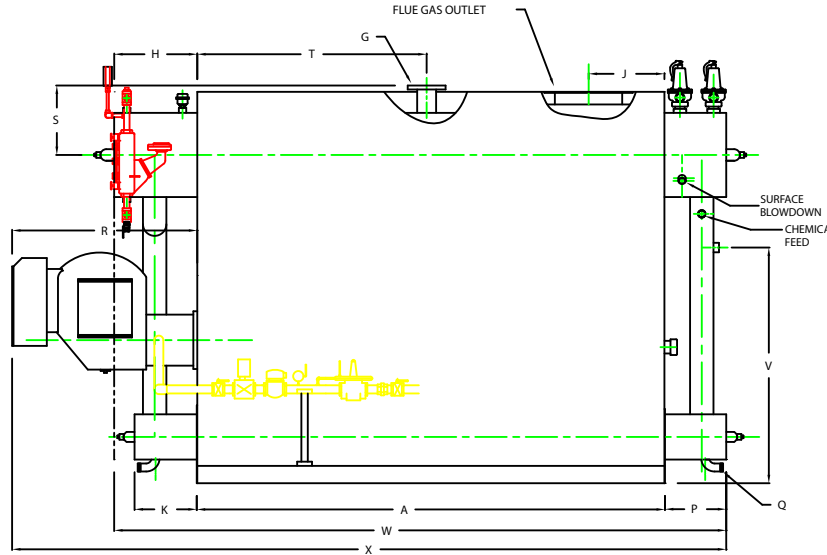


PLAN

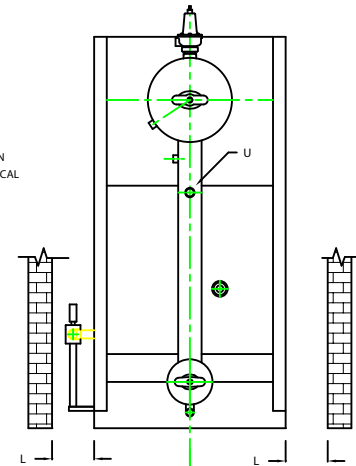
CHIMNEY FLANGE DIMS:
 O.D. = 21"
 I.D. = 16-1/4"
 B.C.D = 18-1/2"
 NO. OF HOLES = 8
 HOLE DIAMETER = 0.53"



FRONT VIEW



SIDE VIEW




REAR VIEW

	INCHES	METRIC
BOILER MODEL - ZF600HS		
A LENGTH OF BASE	111 1/4	2826
A1 LENGTH OF SUPPORT FROM BASE	-	-
B HEIGHT	92 13/16	2357
C WIDTH OF BASE	45 1/2	1156
D CTR. LOWER DRUM TO CTR. UPPER DRUM	67	1702
E CENTER OF LOWER DRUM TO BOTTOM	10 13/16	275
F CENTER OF BURNER OPENING TO BOTTOM	33	838
G OUTLET FLANGE CLASS 300	4	102
H DRUM CLEARANCE FROM TOP, FRONT	20 7/8	530
J CENTER OF FLUE GAS OUTLET TO REAR	18	457
K DRUM CLEARANCE FROM BASE, FRONT	15 1/2	394
L TUBE REMOVAL CLEARANCE FROM BASE	28	711
M UPPER DRUM, OD, NPS	20	508
N LOWER DRUM, OD, NPS	10 3/4	273
O FLUE GAS OUTLET, I.D.	16	406
P DRUM CLEARANCE FROM BASE, REAR	15 5/16	389
Q BLOWDOWN, NPT	1 1/2	38
R BURNER DIMENSION	44	1118
S CENTER OF TOP DRUM TO TOP OF OUTLET	16 1/2	419
T CENTER OF OUTLET TO ENCLOSURE FRONT	54 5/8	1387
U INLET, 3000 PSI ASA HALF COUPLING	1 1/4	32
V FEEDWATER INLET FROM BASE	55 9/16	1411
W OVERALL BOILER LENGTH	147 7/16	3745
X OVERALL BOILER LENGTH W/ BURNER	170 9/16	4332

NOTE: DIMENSIONS SUBJECT TO CHANGE WITHOUT NOTICE
 CONSULT FACTORY FOR CERTIFIED DIMENSIONS.

NOTE: "X" DIMENSION MAY VARY BASED ON BURNER

 UNILUX ADVANCED MFG., LLC. 30 COMMERCE PARK DRIVE NISKAYUNA, NY 12309 Ph: (518) 344-7490 Fax: (518) 344-7495	
<small>THIS DRAWING PREPARES A CONFIDENTIAL, PROPRIETARY DESIGN. ALL RIGHTS FOR REPRODUCTION, MANUFACTURING OR PATENTS ARE RESERVED BY UNILUX ADVANCED MFG.</small>	
PROJECT:	-
LOCATION:	-
Model Sizes	ZF 600HS
BURNER	-
ELECTRIC	-
SUPPLY PSI	-
Drawn By:	RIZ RACAIZA Date: 05AUG09
Checked By:	DAVID RAMSON Date: 05AUG09
Drawing No.	QB00000 Scale: NTS
File No.:	JB00000 REV: 0