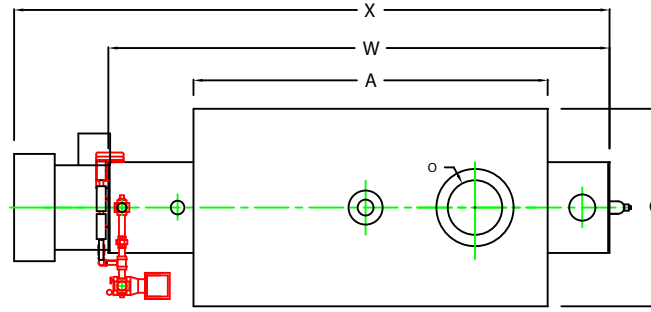
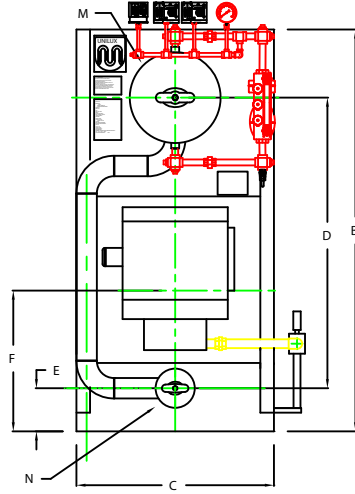


# ZF0350HS

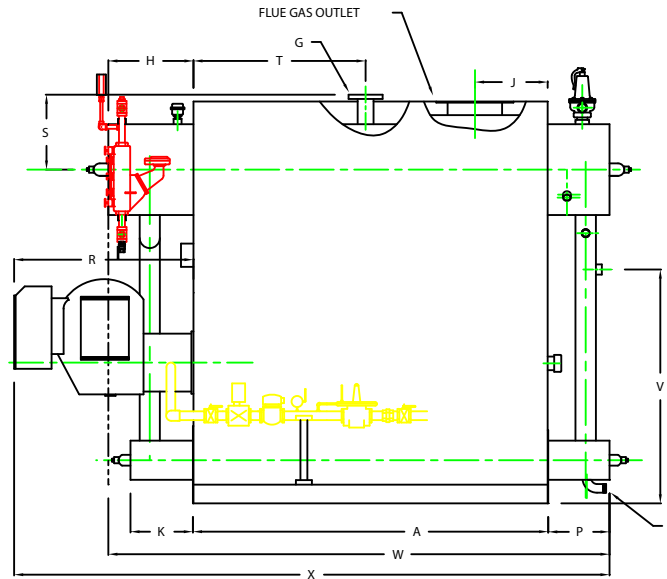


PLAN

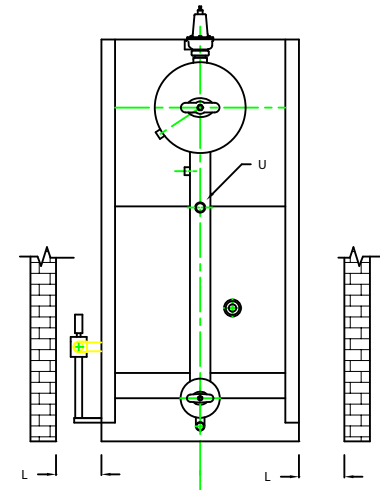
CHIMNEY FLANGE DIMS:  
 O.D. = 17"  
 I.D. = 12-1/4"  
 B.C.D = 14-1/2"  
 NO. OF HOLES = 8  
 HOLE DIAMETER = 0.53"



FRONT VIEW



SIDE VIEW



REAR VIEW

BOILER MODEL - ZF350HS		INCHES	METRIC
A	LENGTH OF BASE	78 1/4	1988
A1	LENGTH OF SUPPORT FROM BASE	-	-
B	HEIGHT	88 9/16	2249
C	WIDTH OF BASE	43 1/2	1105
D	CTR. LOWER DRUM TO CTR. UPPER DRUM	64	1625
E	CENTER OF LOWER DRUM TO BOTTOM	9 9/16	243
F	CENTER OF BURNER OPENING TO BOTTOM	29 3/8	746
G	OUTLET FLANGE CLASS 300	3	76
H	DRUM CLEARANCE FROM TOP, FRONT	19 7/8	505
J	CENTER OF FLUE GAS OUTLET TO REAR	16	406
K	DRUM CLEARANCE FROM BASE, FRONT	14 1/4	362
L	TUBE REMOVAL CLEARANCE FROM BASE	26	660
M	UPPER DRUM, OD, NPS	20	508
N	LOWER DRUM, OD, NPS	8 5/8	219
O	FLUE GAS OUTLET, I.D.	12	305
P	DRUM CLEARANCE FROM BASE, REAR	14	356
Q	BLOWDOWN, NPT	1 1/2	38
R	BURNER DIMENSION	39 1/2	1003
S	CENTER OF TOP DRUM TO TOP OF OUTLET	16 1/2	419
T	CENTER OF OUTLET TO ENCLOSURE FRONT	38 1/16	967
U	INLET, 3000 PSI ASA HALF COUPLING	1 1/4	32
V	FEEDWATER INLET FROM BASE	51 9/16	1310
W	OVERALL BOILER LENGTH	112 1/8	2848
X	OVERALL BOILER LENGTH W/ BURNER	131 3/4	3346

NOTE: DIMENSIONS SUBJECT TO CHANGE WITHOUT NOTICE  
 CONSULT FACTORY FOR CERTIFIED DIMENSIONS.

NOTE: "X" DIMENSION MAY VARY BASED ON BURNER

UNILUX  
 UNILUX ADVANCED MFG., LLC  
 30 COMMERCE PARK DRIVE  
 NISKAYUNA, NY 12309  
 Ph: (518) 344-7490 Fax: (518) 344-7495

THIS DRAWING ENDSIDES A CONFIDENTIAL PROPRIETARY DESIGN. ALL RIGHTS FOR REPRODUCTION, MANUFACTURING OR PATENTS ARE RESERVED BY UNILUX BOILER CORP.

PROJECT:	-
LOCATION:	-
Model Sizes	ZF 350HS
BURNER	-
ELECTRIC	-
SUPPLY PSI	-
Drawn By :	RIZ RACAZA
Checked By :	DAVID RAMSON
Drawing No.	QB00000
File No.:	JB00000
Date:	05AUG09
Date:	05AUG09
Scale	NTS
REV:	0