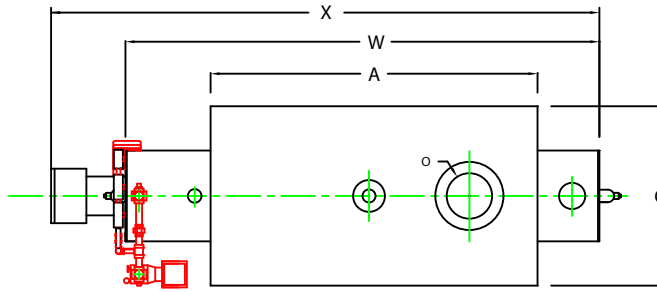
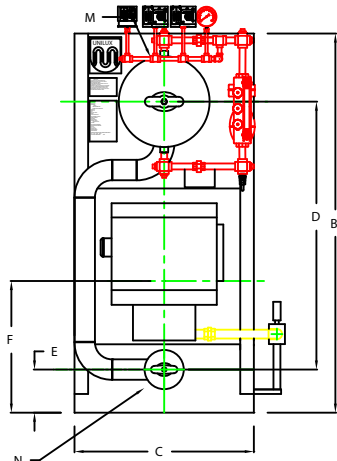


# ZF0250HS

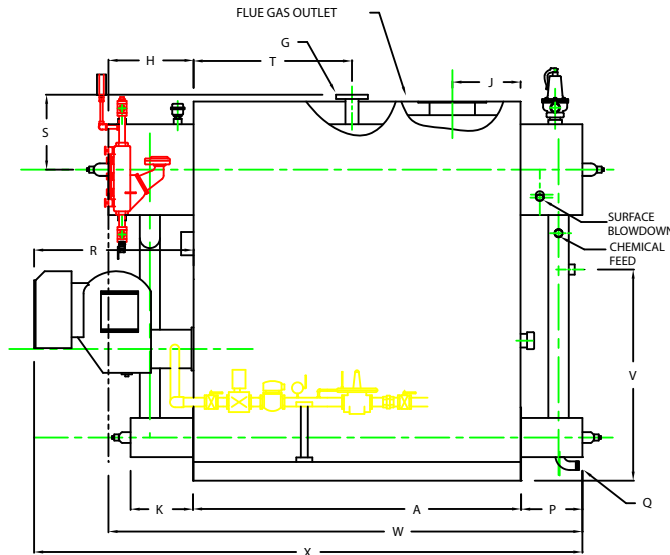


PLAN

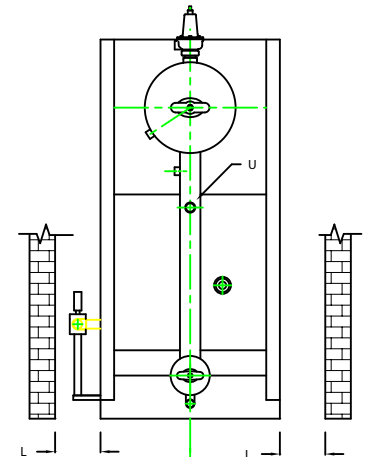
CHIMNEY FLANGE DIMS:  
 O.D. = 15"  
 I.D. = 10-1/4"  
 B.C.D = 12-1/2"  
 NO. OF HOLES = 6  
 HOLE DIAMETER = 0.53"



FRONT VIEW



SIDE VIEW



REAR VIEW

NOTE: DIMENSIONS SUBJECT TO CHANGE WITHOUT NOTICE  
 CONSULT FACTORY FOR CERTIFIED DIMENSIONS.

	BOILER MODEL - ZF250HS	INCHES	METRIC
A	LENGTH OF BASE	72 1/4	1835
A1	LENGTH OF SUPPORT FROM BASE	-	-
B	HEIGHT	83 9/16	2122
C	WIDTH OF BASE	39 1/2	1003
D	CTR. LOWER DRUM TO CTR. UPPER DRUM	59	1499
E	CENTER OF LOWER DRUM TO BOTTOM	9 9/16	243
F	CENTER OF BURNER OPENING TO BOTTOM	27 7/8	708
G	OUTLET FLANGE CLASS 300	2 1/2	64
H	DRUM CLEARANCE FROM TOP, FRONT	19 1/2	495
J	CENTER OF FLUE GAS OUTLET TO REAR	15	381
K	DRUM CLEARANCE FROM BASE, FRONT	14 1/4	362
L	TUBE REMOVAL CLEARANCE FROM BASE	22	559
M	UPPER DRUM, OD, NPS	20	508
N	LOWER DRUM, OD, NPS	8 5/8	219
O	FLUE GAS OUTLET, I.D.	10	254
P	DRUM CLEARANCE FROM BASE, REAR	14	356
Q	BLOWDOWN, NPT	1 1/2	38
R	BURNER DIMENSION	35 1/8	892
S	CENTER OF TOP DRUM TO TOP OF OUTLET	16 1/2	419
T	CENTER OF OUTLET TO ENCLOSURE FRONT	35 1/16	891
U	INLET, 3000 PSI ASA HALF COUPLING	1 1/4	32
V	FEEDWATER INLET FROM BASE	46 9/16	1183
W	OVERALL BOILER LENGTH	105 3/4	2686
X	OVERALL BOILER LENGTH W/ BURNER	121 3/8	3083

NOTE: "X" DIMENSION MAY VARY BASED ON BURNER

UNILUX ADVANCED MFG., LLC.	
30 COMMERCE PARK DRIVE NISKAYUNA, NY 12309 Ph: (518) 344-7490 Fax: (518) 344-7495	
<small>THIS DRAWING (EMBODY) IS A CONFIDENTIAL PROPRIETARY DESIGN. ALL RIGHTS FOR REPRODUCTION, MANUFACTURING OR PATENTS ARE RESERVED BY UNILUX BOILER CORP.</small>	
PROJECT:	-
LOCATION:	-
Model Sizes	ZF 250HS
BURNER	-
ELECTRIC	-
SUPPLY PSI	-
Drawn By :	RIZA RACAZA Date: 05AUG09
Checked By :	DAVID RAMSON Date: 05AUG09
Drawing No.	QB00000 Scale: NTS
File No.:	JB00000 REV: 0