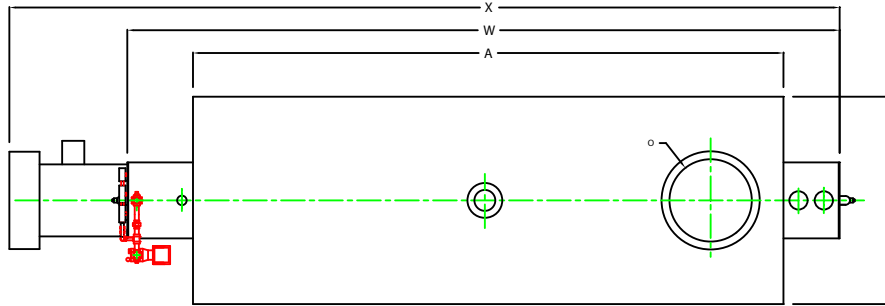
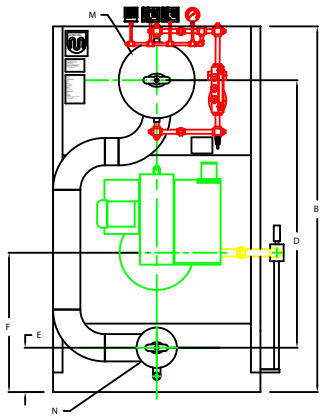


ZF1800HS

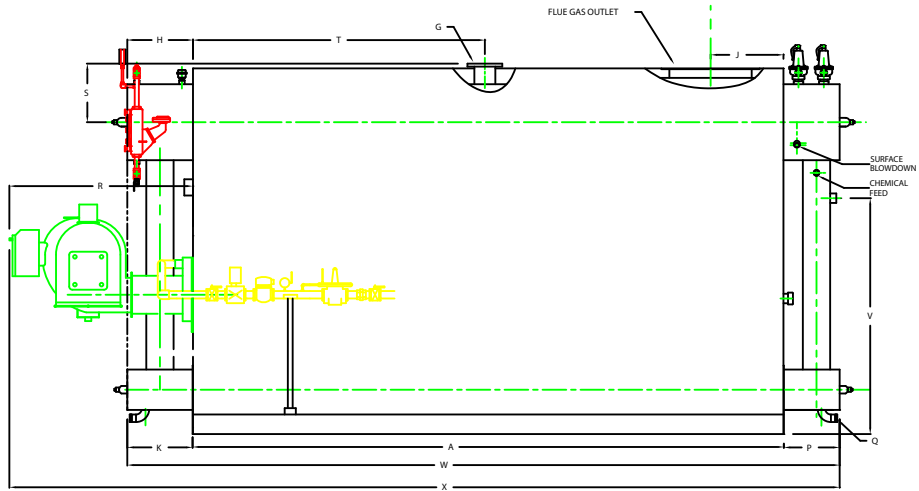


PLAN

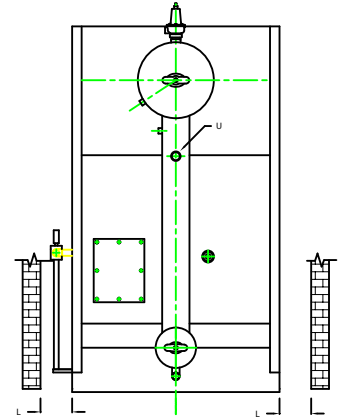
CHIMNEY FLANGE DIMS:
 O.D. = 31"
 I.D. = 26-1/4"
 B.C.D = 28-1/2"
 NO. OF HOLES = 12
 HOLE DIAMETER = 0.53"



FRONT VIEW



SIDE VIEW



REAR VIEW

NOTE: DIMENSIONS SUBJECT TO CHANGE WITHOUT NOTICE
 CONSULT FACTORY FOR CERTIFIED DIMENSIONS.

| | INCHES | METRIC |
|----|-------------------------------------|----------|
| A | 186 3/4 | 4743 |
| AL | | |
| AL | LENGTH OF SUPPORT FROM BASE | |
| B | HEIGHT | 115 5/16 |
| C | WIDTH OF BASE | 65 1/2 |
| D | CTR. LOWER DRUM TO CTR. UPPER DRUM | 84 1/2 |
| E | CENTER OF LOWER DRUM TO BOTTOM | 13 13/16 |
| F | CENTER OF BURNER OPENING TO BOTTOM | 42 5/8 |
| G | OUTLET FLANGE CLASS 300 | 6 |
| H | DRUM CLEARANCE FROM TOP FRONT | 22 1/8 |
| J | CENTER OF FLUE GAS OUTLET TO REAR | 23 |
| K | DRUM CLEARANCE FROM BASE FRONT | 21 3/8 |
| L | TUBE REMOVAL CLEARANCE FROM BASE | 48 |
| M | UPPER DRUM O.D. NPS | 24 |
| N | LOWER DRUM O.D. NPS | 12 3/4 |
| O | FLUE GAS OUTLET I.D. | 26 |
| P | DRUM CLEARANCE FROM BASE REAR | 18 3/8 |
| Q | BLOWDOWN NPT | 2 |
| R | BURNER DIMENSION | 58 |
| S | CENTER OF TOP DRUM TO TOP OF OUTLET | 18 1/2 |
| T | CENTER OF OUTLET TO ENCLOSURE FRONT | 92 5/16 |
| U | INLET 3000 PSI ASA HALF COUPLING | 2 |
| V | FEEDWATER INLET FROM BASE | 74 5/16 |
| W | OVERALL BOILER LENGTH | 227 1/4 |
| X | OVERALL BOILER LENGTH W/ BURNER | 263 1/8 |

NOTE: "X" DIMENSION MAY VARY BASED ON BURNER

UNILUX ADVANCED MFG. LLC.
 30 COMMERCE PARK DRIVE
 NESKAYUNA, NY 12859
 PH: (518) 844-7490 FAX: (518) 344-7495

THIS DRAWING IS UNLESS OTHERWISE SPECIFIED, AN ISO 9001 REGISTERED COMPANY. THE INFORMATION IS NOT TO BE USED FOR ANY OTHER PURPOSES WITHOUT THE WRITTEN PERMISSION OF UNILUX ADVANCED MFG. LLC.

| | |
|--------------|--------------|
| PROJECT: | |
| LOCATION: | |
| Model Size: | ZF1800HS |
| BURNER: | |
| ELECTRIC: | |
| SUPPLY PSI: | |
| Drawn By: | BIG BACAZZA |
| Checked By: | DAVID RAMSON |
| Drawing No.: | 18000000 |
| File No.: | 18000000 |
| Date: | 05/10/20 |
| Scale: | NTE |
| REV: | 0 |