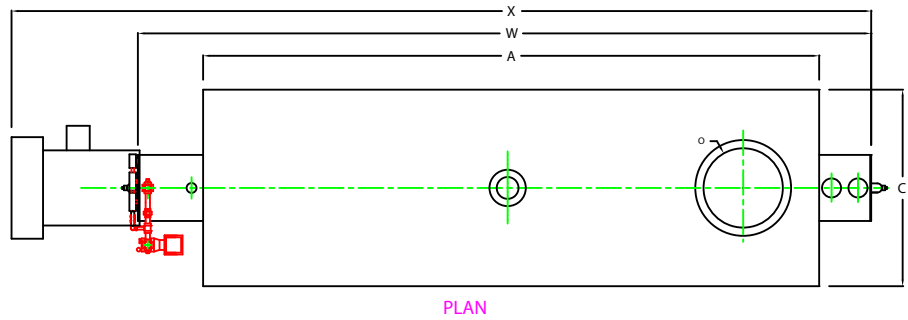
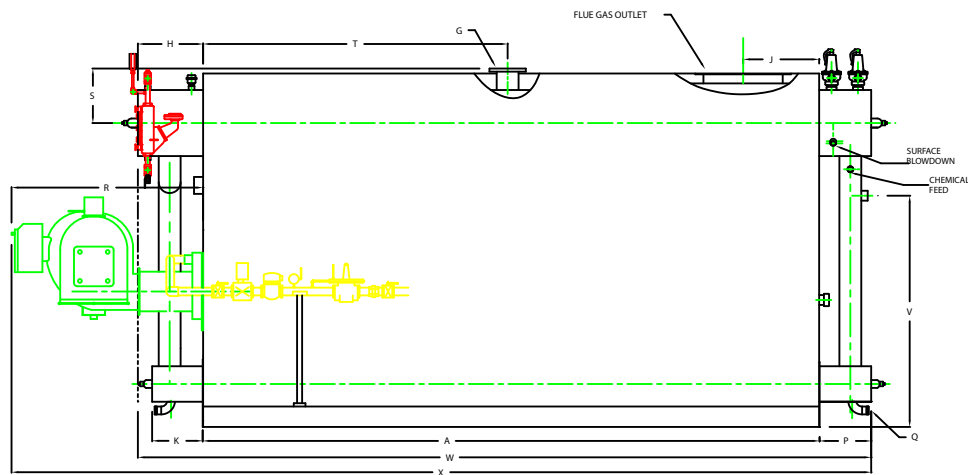


# ZF1600HS

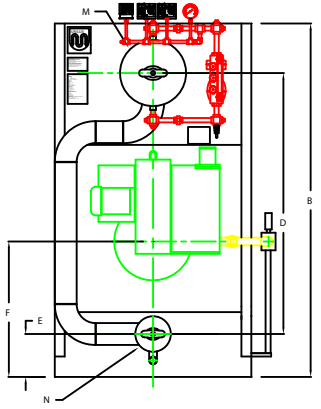


CHIMNEY FLANGE DIMS:  
 O.D. = 29"  
 I.D. = 24-1/4"  
 B.C.D = 26-1/2"  
 NO. OF HOLES = 12  
 HOLE DIAMETER = 0.53"

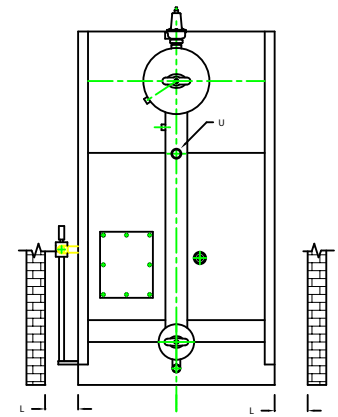
PLAN



SIDE VIEW



FRONT VIEW




REAR VIEW

BOILER MODEL - ZF1600HS	INCHES	METRIC
A LENGTH OF BASE	186 7/8	4747
AI LENGTH OF SUPPORT FROM BASE		
B HEIGHT	106 13/16	2713
C WIDTH OF BASE	59 1/2	1511
D CTR. LOWER DRUM TO CTR. UPPER DRUM	79	2007
E CENTER OF LOWER DRUM TO BOTTOM	12 13/16	325
F CENTER OF BURNER OPENING TO BOTTOM	40 5/16	1024
G OUTLET FLANGE CLASS 300	6	152
H DRUM CLEARANCE FROM TOP FRONT	20 7/8	530
J CENTER OF FLUE GAS OUTLET TO REAR	23	584
K DRUM CLEARANCE FROM BASE FRONT	15	406
L TUBE REMOVAL CLEARANCE FROM BASE	42	1067
M UPPER DRUM, OD, NPS	20	508
N LOWER DRUM, OD, NPS	10 3/4	273
Q FLUE GAS OUTLET, ID	24	610
P DRUM CLEARANCE FROM BASE, REAR	16 3/8	416
Q BLOWDOWN, NPT	2	51
R BURNER DIMENSION	58	1473
S CENTER OF TOP DRUM TO TOP OF OUTLET	116 1/2	419
T CENTER OF OUTLET TO ENCLOSURE FRONT	92 5/16	2345
U INLET, 3000 PSI ASA HALF COUPLING	2	51
V FEEDWATER INLET FROM BASE	69 13/16	1773
WY OVERALL BOILER LENGTH	224 1/8	5693
X OVERALL BOILER LENGTH W/ BURNER	261 1/4	6636

NOTE: "X" DIMENSION MAY VARY BASED ON BURNER

NOTE: DIMENSIONS SUBJECT TO CHANGE WITHOUT NOTICE  
 CONSULT FACTORY FOR CERTIFIED DIMENSIONS.

 UNILUX ADVANCED MFG., LLC. 30 COMMERCE PARK DRIVE NISKAYUNA, NY 12120 Ph: (518) 344-7490 Fax: (518) 344-7495	
<small>THIS DRAWING PROVIDES A COMPREHENSIVE GENERAL OVERVIEW. ALL RIGHTS OF REPRODUCTION, PRODUCT TRADE OR SERVICE ARE RESERVED BY UNILUX ADVANCED MFG., LLC.</small>	
PROJECT:	
LOCATION:	
Model Size:	ZF 1600HS
BURNER:	
ELECTRIC:	
SUPPLY PSI:	
Drawn By:	RIZ RACAZA Date: 05AUG09
Checked by:	DAVID RAMSON Date: 05AUG09
Drawing No:	050000 Scale: NYS
File No.:	1800000 REV: 0