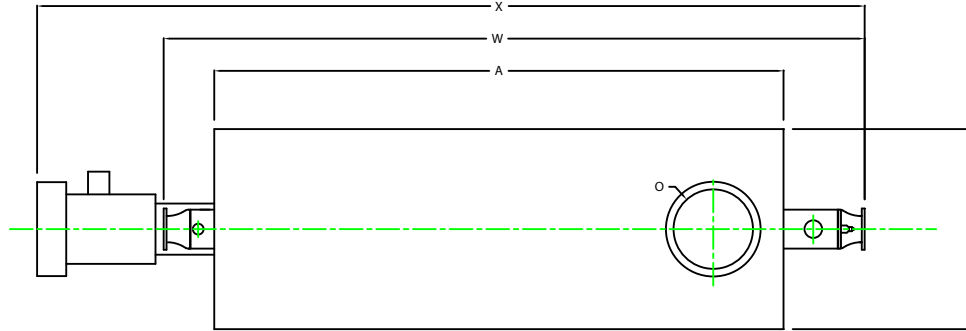
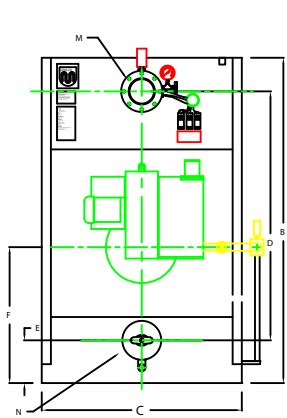


ZF1800W

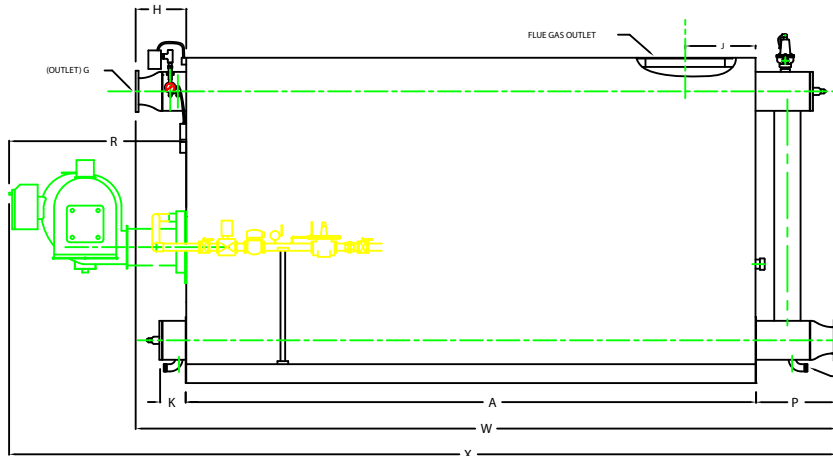


CHIMNEY FLANGE DIMS:
 O.D. = 31"
 I.D. = 26-1/4"
 B.C.D. = 28-1/2"
 NO. OF HOLES = 12
 HOLE DIAMETER = 0.53"

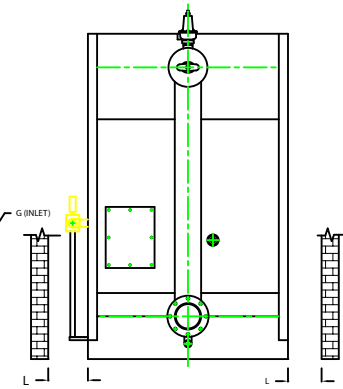
PLAN



FRONT VIEW



SIDE VIEW



REAR VIEW

	INCHES	METRIC
BOILER MODEL - ZF1800W		
A1 LENGTH OF BASE	186.3/8	4743
A11 LENGTH OF SUPPORT FROM BASE	-	-
B HEIGHT	198 1/2	2705
C WIDTH OF BASE	65 1/2	1664
D1 CTR. LOWER DRUM TO CTR. UPPER DRUM	8 1/2	200
E CENTER OF LOWER DRUM TO BOTTOM	14	356
F CENTER OF BURNER OPENING TO BOTTOM	44 1/2	1130
G1 INLET/OUTLET FLANGE CLASS 150	8	203
H1 NOZZLE CLEARANCE FROM TOP FRONT	17 1/8	435
J CENTER OF FLUE GAS OUTLET TO REAR	23	584
K DRUM CLEARANCE FROM BASE, FRONT	3.5/8	213
L TUBE REMOVAL CLEARANCE FROM BASE	48	1219
M UPPER DRUM O.D. NPS	12 3/4	324
N1 LOWER DRUM O.D. NPS	12 3/4	324
O FLUE GAS OUTLET O.D.	26	660
P NOZZLE CLEARANCE FROM BASE, REAR	27 1/8	689
Q BLOWDOWN NPT	2	51
R1 BURNER DIMENSION	58	1473
W OVERALL BOILER LENGTH	231	5867
X OVERALL BOILER LENGTH WITH BURNER	271.7/8	6906

NOTE: DIMENSIONS SUBJECT TO CHANGE WITHOUT NOTICE
 CONTACT FACTORY FOR CERTIFIED DIMENSIONS.

NOTE: "X" DIMENSION MAY VARY BASED ON BURNER

MUNILUX ADVANCED MFG. LLC
 10 COMMERCE PARK DRIVE
 ROSAURORA, NY 12209
 PH: (518) 344-7400 FAX: (518) 344-7405

THIS DOCUMENT IS THE PROPERTY OF MUNILUX ADVANCED MFG. LLC. IT IS TO BE USED FOR THE PROJECT AND NOT TO BE REPRODUCED OR TRANSMITTED IN ANY FORM OR BY ANY MEANS, ELECTRONIC OR MECHANICAL, INCLUDING PHOTOCOPYING, RECORDING, OR BY ANY INFORMATION STORAGE AND RETRIEVAL SYSTEM.

PROJECT: _____
 LOCATION: _____
 Model Size: **ZF 1800W**
 BURNER: _____
 ELECTRIC: _____
 EQUIP. Pk: _____

Drawn By: **RIZ BAKAZA** Date: **05AUG09**
 Checked By: **DAVID RAMSON** Date: **05AUG09**
 Drawn No.: **CS00000** Scale: **NYS**
 File No.: **JB00000** REV: **0**