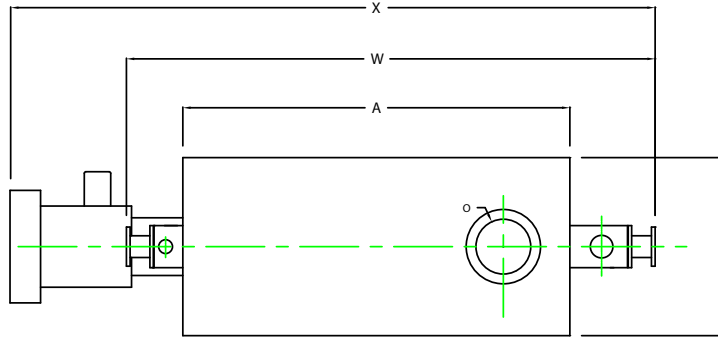
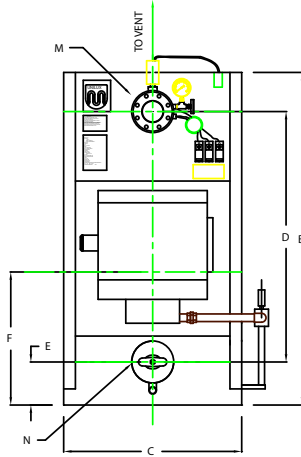


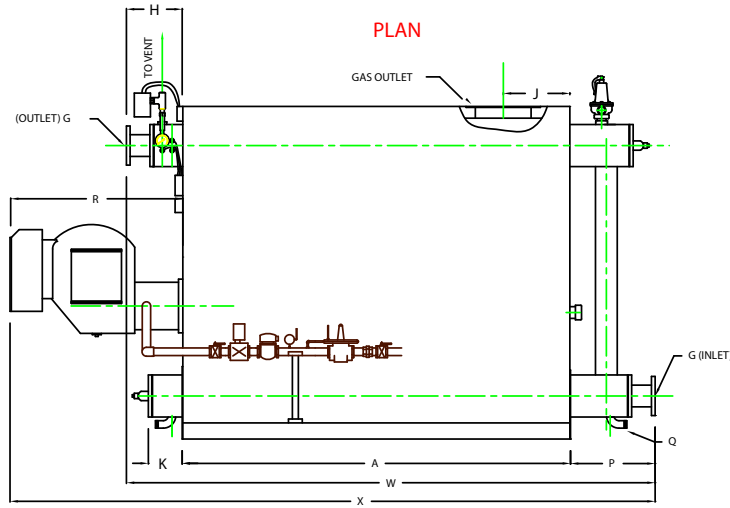
# ZF0500W



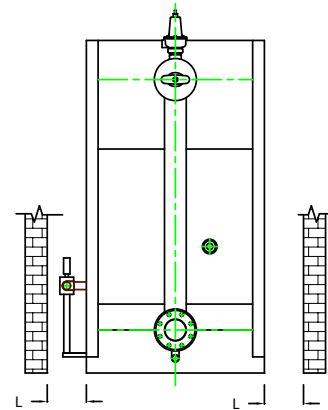
CHIMNEY FLANGE DIMS:  
 O.D. = 19"  
 I.D. = 14-1/4"  
 B.C.D = 16-1/2"  
 NO. OF HOLES = 8  
 HOLE DIAMETER = 0.53"



FRONT VIEW



SIDE VIEW



REAR VIEW

	BOILER MODEL - ZF500W	INCHES	METRIC
A	LENGTH OF BASE	99 1/4	2521
A1	LENGTH OF SUPPORT FROM BASE	-	-
B	HEIGHT	85	2159
C	WIDTH OF BASE	45 1/2	1156
D	CTR. LOWER DRUM TO CTR. UPPER DRUM	64	1626
E	CENTER OF LOWER DRUM TO BOTTOM	11	279
F	CENTER OF BURNER OPENING TO BOTTOM	34	864
G	INLET / OUTLET FLANGE, CLASS 150	5	127
H	NOZZLE CLEARANCE FROM TOP, FRONT	14 1/4	362
J	CENTER OF FLUE GAS OUTLET TO REAR	17	432
K	DRUM CLEARANCE FROM BASE, FRONT	8 5/8	219
L	TUBE REMOVAL CLEARANCE FROM BASE	28	711
M	UPPER DRUM, OD, NPS	10 3/4	273
N	LOWER DRUM, OD, NPS	10 3/4	273
O	FLUE GAS OUTLET, I.D.	14	356
P	NOZZLE CLEARANCE FROM BASE, REAR	21 5/8	549
Q	BLOWDOWN, NPT	1 1/2	38
R	BURNER DIMENSION	44	1118
W	OVERALL BOILER LENGTH	135 1/8	3432
X	OVERALL BOILER LENGTH WITH BURNER	164 7/8	4188

NOTE: "X" DIMENSION MAY VARY BASED ON BURNER

NOTE: DIMENSIONS SUBJECT TO CHANGE WITHOUT NOTICE  
 CONSULT FACTORY FOR CERTIFIED DIMENSIONS.

UNILUX ADVANCED MFG. LLC	
30 COMMERCE PARK DRIVE NISKAYUNA, NY 12309 Ph: (518) 344-7490 Fax: (518) 344-7495	
<small>THIS DRAWING REMAINS A CONFIDENTIAL, PROPRIETARY DESIGN. ALL RIGHTS FOR REPRODUCTION, MANUFACTURING OR PATENTS ARE RESERVED BY UNILUX BOILER CORP.</small>	
PROJECT:	-
LOCATION:	-
Model Sizes:	ZF 500W
BURNER:	-
ELECTRIC:	-
SUPPLY PSI:	-
Drawn By:	RIZ RACAZA
Checked By:	DAVID RAMSON
Drawing No.:	QB000000
File No.:	JB000000
Date:	05AUG09
Date:	05AUG09
Scale:	NTS
REV:	0