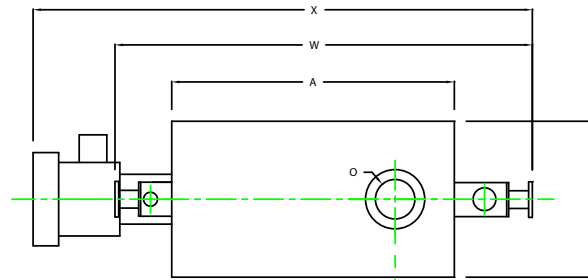
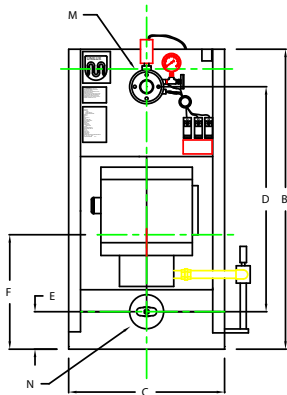


ZF0250W

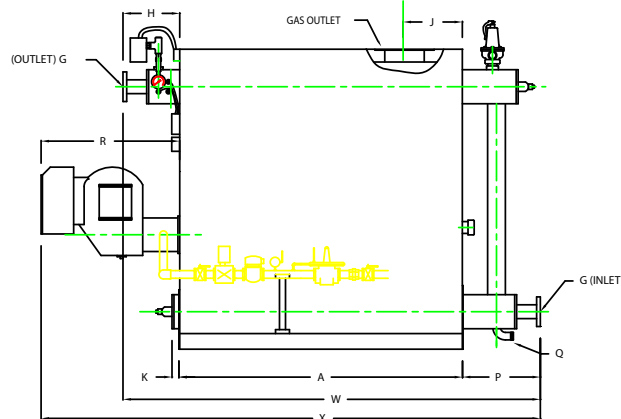


PLAN

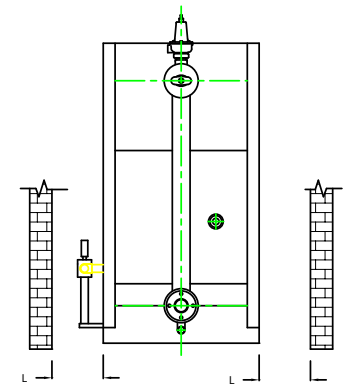
CHIMNEY FLANGE DIMS:
 O.D. = 15"
 I.D. = 10-1/4"
 B.C.D = 12-1/2"
 NO. OF HOLES = 6
 HOLE DIAMETER = 0.53"



FRONT VIEW



SIDE VIEW



REAR VIEW

BOILER MODEL - ZF250W		INCHES	METRIC
A	LENGTH OF BASE	.72	1829
A1	LENGTH OF SUPPORT FROM BASE	-	-
B	HEIGHT	.76	1930
C	WIDTH OF BASE	39 1/2	1003
D	CTR. LOWER DRUM TO CTR. UPPER DRUM	.57	1448
E	CENTER OF LOWER DRUM TO BOTTOM	9 1/2	241
F	CENTER OF BURNER OPENING TO BOTTOM	.29	737
G	INLET / OUTLET FLANGE, CLASS 150	.3	76
H	NOZZLE CLEARANCE FROM TOP, FRONT	14 1/4	362
J	CENTER OF FLUE GAS OUTLET TO REAR	.15	381
K	DRUM CLEARANCE FROM BASE, FRONT	1 3/4	44
L	TUBE REMOVAL CLEARANCE FROM BASE	.22	559
M	UPPER DRUM, OD, NPS	8 5/8	219
N	LOWER DRUM, OD, NPS	8 5/8	219
O	FLUE GAS OUTLET, ID	10	254
P	NOZZLE CLEARANCE FROM BASE, REAR	20 1/8	511
Q	BLOWDOWN, NPT	1 1/2	38
R	BURNER DIMENSION	35 1/8	892
W	OVERALL BOILER LENGTH	106 3/8	2702
X	OVERALL BOILER LENGTH WITH BURNER	127 1/4	3232

NOTE: "X" DIMENSION MAY VARY BASED ON BURNER

NOTE: DIMENSIONS SUBJECT TO CHANGE WITHOUT NOTICE
 CONSULT FACTORY FOR CERTIFIED DIMENSIONS.

UNILUX ADVANCED MFG., LLC	
30 COMMERCE PARK DRIVE NISKAYUNA, NY 12099 Ph: (518) 344-7490 Fax: (518) 344-7495	
<small>THIS DRAWING PRESENTS A CONFIDENTIAL, PROPRIETARY DESIGN. ALL RIGHTS FOR REPRODUCTION, MANUFACTURING OR PATENTS ARE RESERVED BY UNILUX BOILER CORP.</small>	
PROJECT:	-
LOCATION:	-
Model Sizes:	ZF 250W
BURNER:	-
ELECTRIC:	-
SUPPLY PSI:	-
Drawn By:	RIZ RACAZA
Checked By:	DAVID RAMSON
Drawing No.:	QB000000
File No.:	JB000000
Date:	05AUG09
Date:	05AUG09
Scale:	NTS
REV:	0