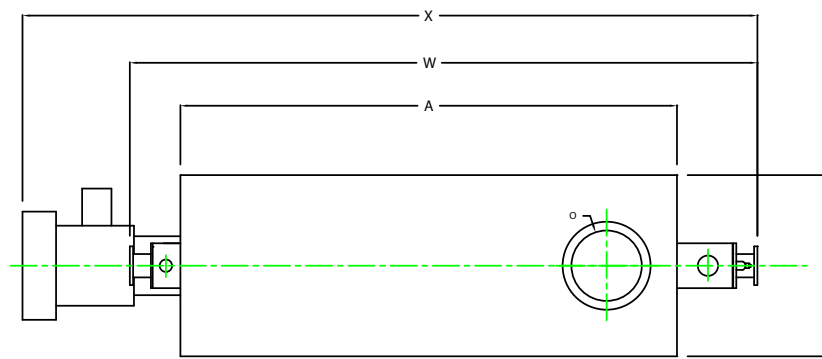
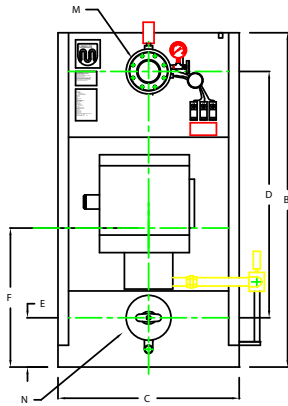


ZF1000W

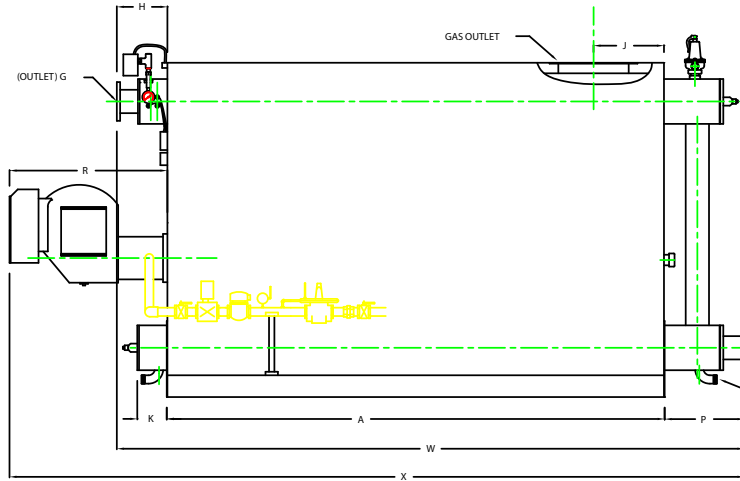


PLAN

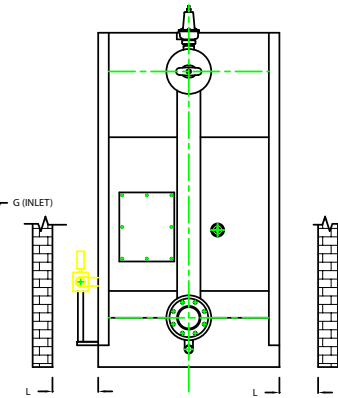
CHIMNEY FLANGE DIMS:
 O.D. = 25"
 I.D. = 20-1/4"
 B.C.D = 22-1/2"
 NO. OF HOLES = 8
 HOLE DIAMETER = 0.53"



FRONT VIEW



SIDE VIEW




REAR VIEW

	INCHES	METRIC
BOILER MODEL - ZF1000W		
A	141 1/2	3594
A1	-	-
B	95	2413
C	51 1/2	1308
D	70	1778
E	14	356
F	39 1/2	1003
G	6	152
H	14 1/4	362
J	20	508
K	8 5/8	219
L	34	864
M	12 3/4	324
N	12 3/4	324
D	20	508
P	22 5/8	575
Q	2	51
R	44 7/8	1140
W	178 3/8	4531
X	209	5309

NOTE: "X" DIMENSION MAY VARY BASED ON BURNER

NOTE: DIMENSIONS SUBJECT TO CHANGE WITHOUT NOTICE
 CONSULT FACTORY FOR CERTIFIED DIMENSIONS.

 UNILUX ADVANCED MFG., LLC 30 COMMERCE PARK DRIVE NISKAYUNA, NY 12309 PH: (518) 344-7499 FAX: (518) 344-7495	
<small>UNILUX ADVANCED MFG. IS A PROFESSIONAL CORPORATION. ALL RIGHTS FOR REPRODUCTION OR PATENTS ARE RESERVED BY UNILUX ADVANCED MFG.</small>	
PROJECT:	
LOCATION:	Model Sizes ZF 1000W
BURNER:	
ELECTRIC:	
SUPPLY PSI:	
Drawn By:	RIZ RACAZA Date: 05AUG09
Checked by:	DAVID RAMSON Date: 05AUG09
Drawing No.:	08000000 Scale: NTS
File No.:	J8000000 REV: 0