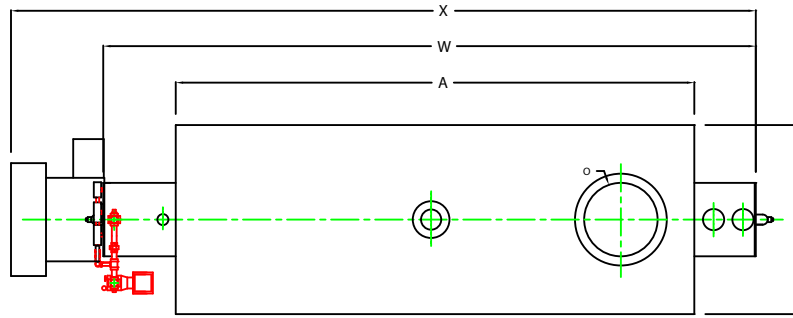
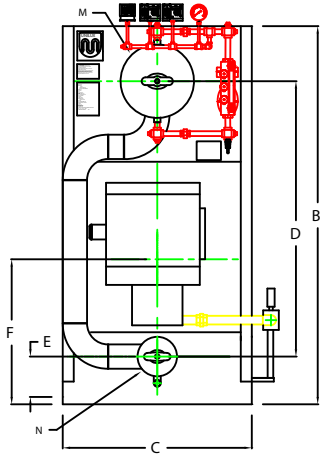


ZF1000HS

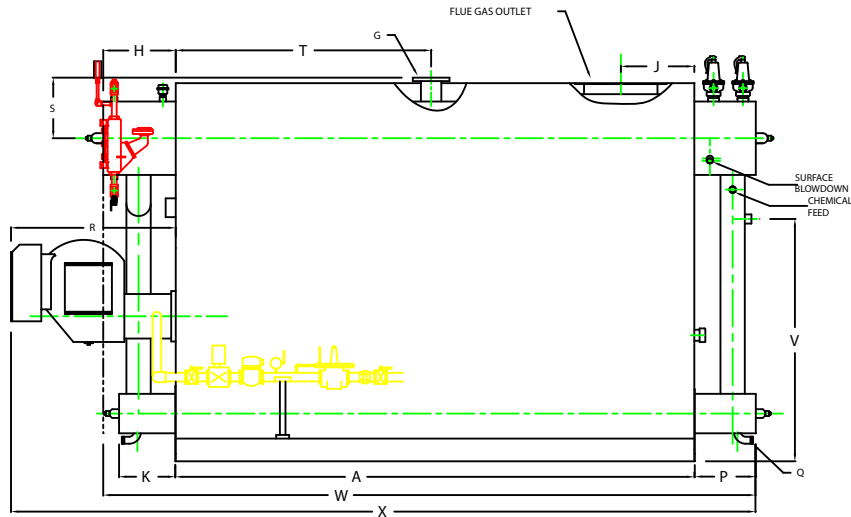


PLAN

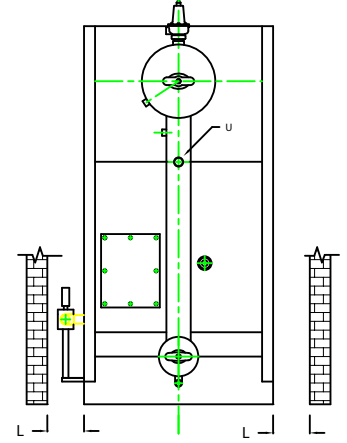
CHIMNEY FLANGE DIMS:
 O.D. = 25"
 I.D. = 20-1/4"
 B.C.D = 22-1/2"
 NO. OF HOLES = 8
 HOLE DIAMETER = 0.53"



FRONT VIEW



SIDE VIEW



REAR VIEW

NOTE: DIMENSIONS SUBJECT TO CHANGE WITHOUT NOTICE
 CONSULT FACTORY FOR CERTIFIED DIMENSIONS.

BOILER MODEL - ZF1000HS	INCHES	METRIC
A LENGTH OF BASE	141 5/8	3597
AT LENGTH OF SUPPORT FROM BASE	-	-
B HEIGHT	102 13/16	2611
C WIDTH OF BASE	51 1/2	1308
D CTR. LOWER DRUM TO CTR. UPPER DRUM	75	1905
E CENTER OF LOWER DRUM TO BOTTOM	12 13/16	325
F CENTER OF BURNER OPENING TO BOTTOM	38 5/16	973
G OUTLET FLANGE CLASS 300	6	152
H DRUM CLEARANCE FROM TOP FRONT	20 7/8	530
J CENTER OF FLUE GAS OUTLET TO REAR	20	508
K DRUM CLEARANCE FROM BASE FRONT	16	406
L TUBE REMOVAL CLEARANCE FROM BASE	34	864
M UPPER DRUM, OD, NPS	20	508
N LOWER DRUM, OD, NPS	10 3/4	273
O FLUE GAS OUTLET, I.D.	20	508
P DRUM CLEARANCE FROM BASE, REAR	17 3/8	441
Q BLOWDOWN, NPT	1 1/2	38
R BURNER DIMENSION	44 7/8	1140
S CENTER OF TOP DRUM TO TOP OF OUTLET	16 1/2	419
T CENTER OF OUTLET TO ENCLOSURE FRONT	69 11/16	1770
U INLET, 3000 PSI ASA HALF COUPLING	1 1/2	38
V FEEDWATER INLET FROM BASE	65 13/16	1672
W OVERALL BOILER LENGTH	179 7/8	4569
X OVERALL BOILER LENGTH W/ BURNER	203 7/8	5178

NOTE: "X" DIMENSION MAY VARY BASED ON BURNER

UNILUX ADVANCED MFG., LLC.	
30 COMMERCE PARK DRIVE NISKAYUNA, NY 12309 PH: (518) 344-7490 FAX: (518) 344-7495	
<small>THIS DRAWING INCLUDES A COMPENSATED REPRESENTATION. ALL RIGHTS FOR REPRODUCTION, TRANSMISSION OR OTHERWISE ARE RESERVED BY UNILUX BOILER CORP.</small>	
PROJECT:	-
LOCATION:	-
Model Sizes:	ZF 1000HS
BURNER:	-
ELECTRIC:	-
SUPPLY PSI:	-
Drawn By:	RIZ RACAZA
Checked By:	DAVID RAMSON
Drawing No.:	QB00000
File No.:	JB00000
Date:	05AUG09
Date:	05AUG09
Scale:	NTS
REV:	0