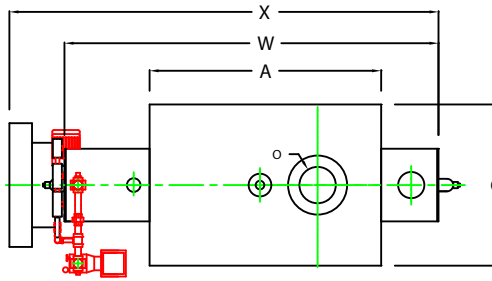
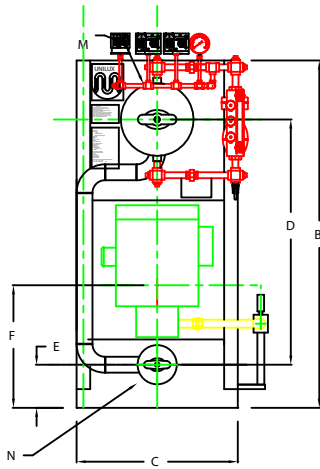


ZF0100HS

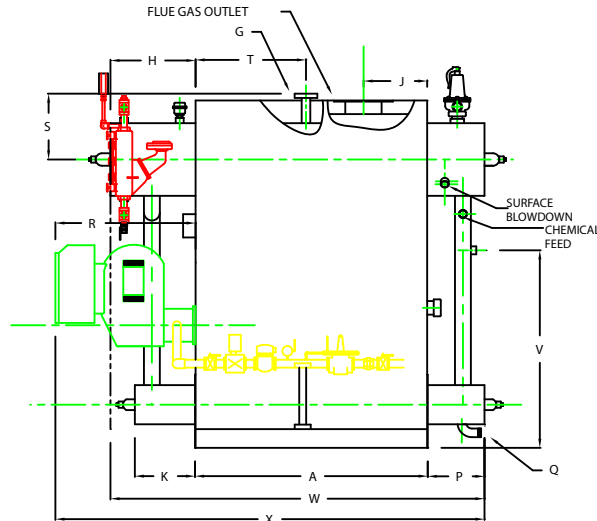


PLAN

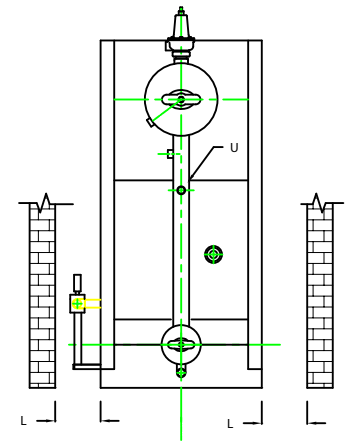
CHIMNEY FLANGE DIMS:
 O.D. = 13"
 I.D. = 8-1/4"
 B.C.D = 10-1/2"
 NO. OF HOLES = 6
 HOLE DIAMETER = 0.53"



FRONT VIEW



SIDE VIEW



REAR VIEW

NOTE: DIMENSIONS SUBJECT TO CHANGE WITHOUT NOTICE
 CONSULT FACTORY FOR CERTIFIED DIMENSIONS.

BOILER MODEL - ZF100HS	INCHES	METRIC
A LENGTH OF BASE	51 1/4	1302
A1 LENGTH OF SUPPORT FROM BASE	-	-
B HEIGHT	26 9/16	1945
C WIDTH OF BASE	35 1/2	902
D CTR. LOWER DRUM TO CTR. UPPER DRUM	54	1372
E CENTER OF LOWER DRUM TO BOTTOM	9 9/16	242
F CENTER OF BURNER OPENING TO BOTTOM	25 7/8	657
G OUTLET FLANGE CLASS 300	1 1/2	38
H DRUM CLEARANCE FROM TOP, FRONT	19 9/16	497
J CENTER OF FLUE GAS OUTLET TO REAR	14	356
K DRUM CLEARANCE FROM BASE, FRONT	13 3/4	349
L TUBE REMOVAL CLEARANCE FROM BASE	18	457
M UPPER DRUM, OD, NPS	16	406
N LOWER DRUM, OD, NPS	8 5/8	219
O FLUE GAS OUTLET, I.D.	8	203
P DRUM CLEARANCE FROM BASE, REAR	13	330
Q BLOWDOWN, NPT	1 1/2	38
R BURNER DIMENSION	31 1/8	791
S CENTER OF TOP DRUM TO TOP OF OUTLET	14 1/2	368
T CENTER OF OUTLET TO ENCLOSURE FRONT	24 7/16	621
U INLET, 3000 PSI ASA HALF COUPLING	1	25
V FEEDWATER INLET FROM BASE	43 9/16	1106
W OVERALL BOILER LENGTH	83 13/16	2129
X OVERALL BOILER LENGTH W/ BURNER	95 3/8	2423

NOTE: "X" DIMENSION MAY VARY BASED ON BURNER

UNILUX UNILUX ADVANCED MFG., LLC.
 30 COMMERCE PARK DRIVE
 NISKAYUNA, NY 12309
 Ph: (518) 344-7490 Fax: (518) 344-7495

THIS DRAWING EMBODIES A CONFIDENTIAL PROPRIETARY DESIGN. ALL RIGHTS FOR REPRODUCTION, MANUFACTURING OR PATENTS ARE RESERVED BY UNILUX BOILER CORP.

PROJECT:	-
LOCATION:	-
Model Sizes	ZF 100HS
BURNER	-
ELECTRIC	-
SUPPLY PSI	-
Drawn By :	RIZ RACAIZA Date: 05AUG09
Checked By :	DAVID RAMSON Date: 05AUG09
Drawing No.	QB00000 Scale NTS
File No. :	JB00000 REV: 0